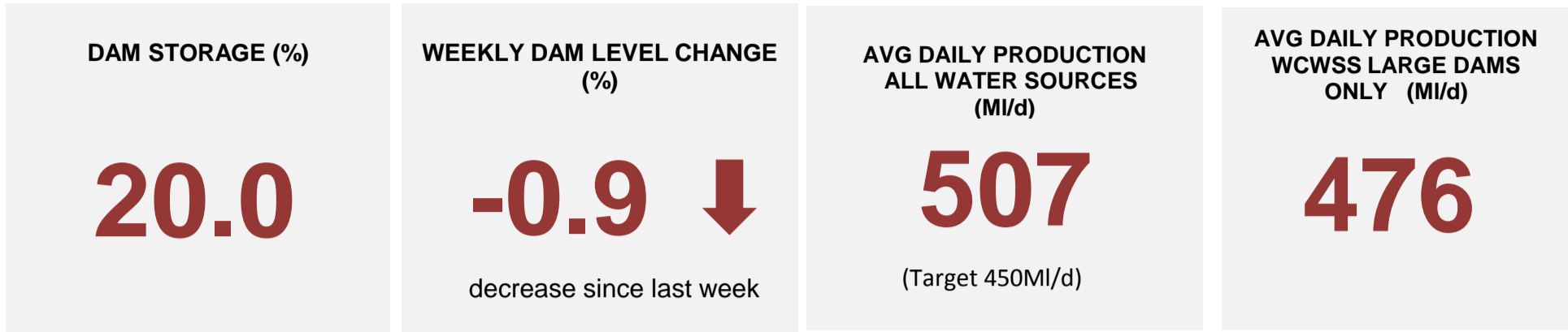


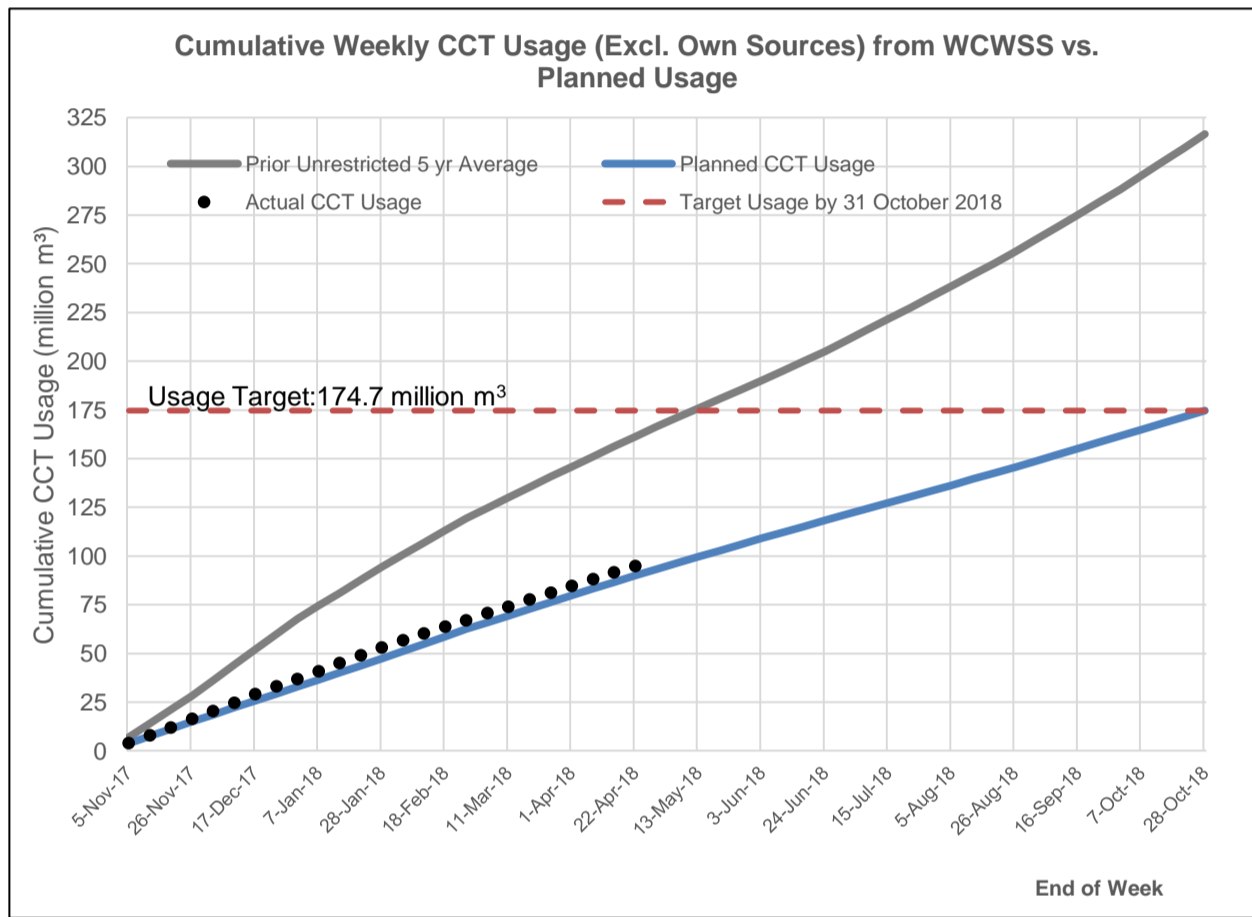


City of Cape Town: Water Dashboard

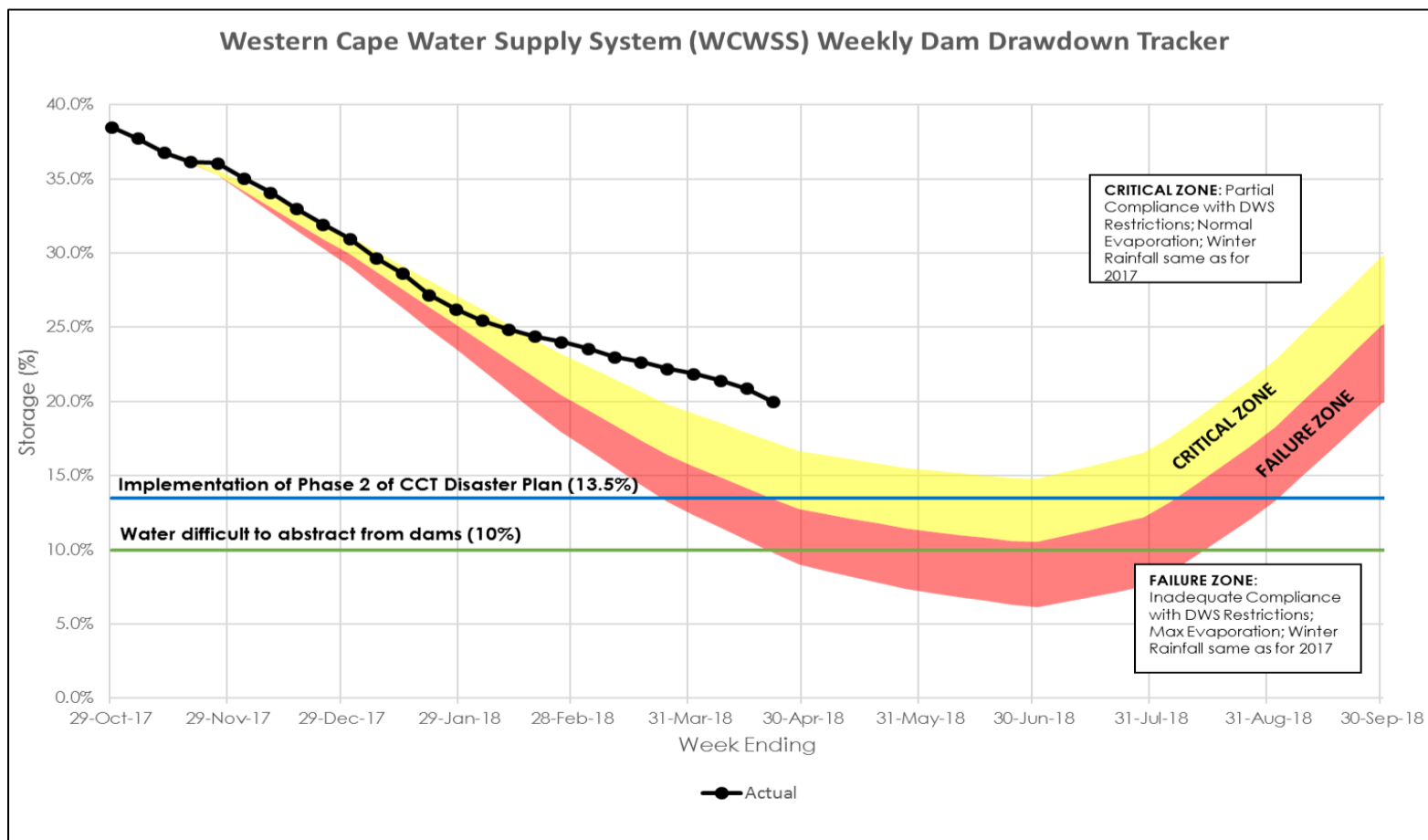
23 April 2018



Water Usage From Large Dams Comprising The Western Cape Water Supply System (WCWSS)



Western Cape Water Supply System (WCWSS) Weekly Dam Drawdown Tracker



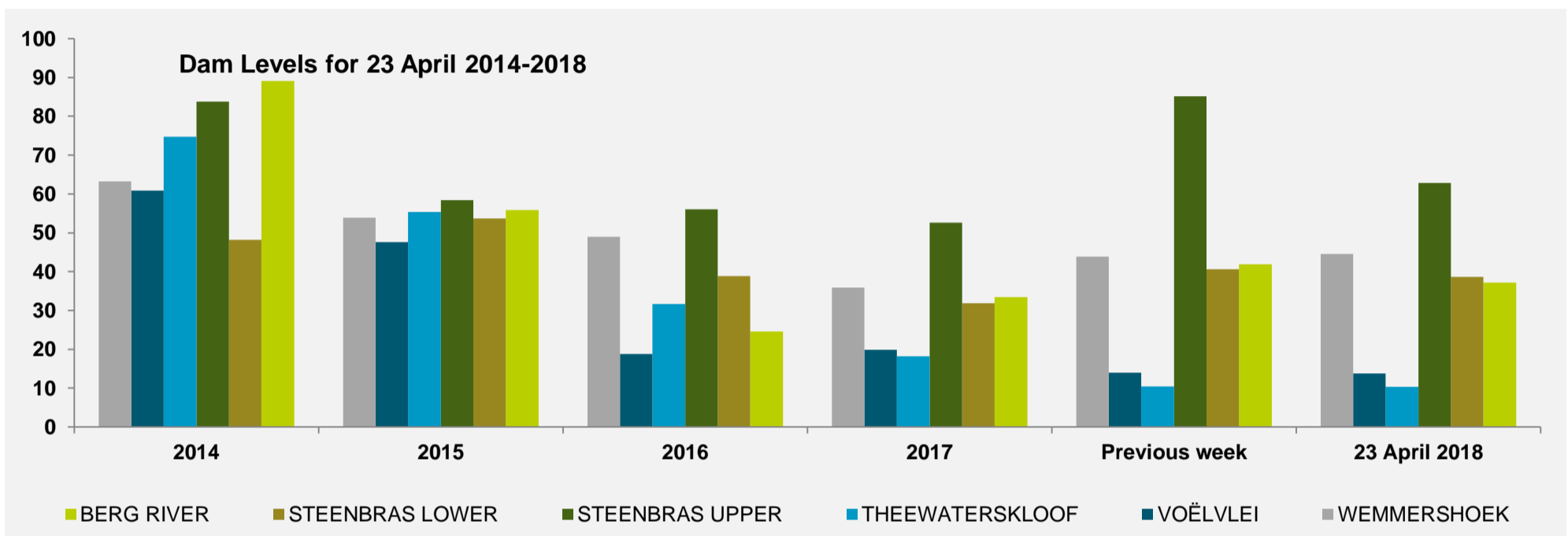
Disclaimer: The data depicted above is indicative and has been based on the City's own assessment of water use from the WCWSS. It is subject to official verification by the National Department of Water and Sanitation.

Water Stored in Major Dams Comprising Western Cape Water Supply System (WCWSS)

MAJOR DAMS	STORAGE						
	CAPACITY	%	%	%	%	%	%
	MI	23 April 2018	Previous week	2017	2016	2015	2014
BERG RIVER	130 010	37.1	41.9	33.5	24.6	55.9	89.1
STEENBRAS LOWER	33 517	38.6	40.6	31.9	38.8	53.6	48.2
STEENBRAS UPPER	31 767	62.9	85.1	52.6	56.0	58.4	83.8
THEEWATERSKLOOF	480 188	10.3	10.4	18.2	31.6	55.3	74.7
VOËLVLEI	164 095	13.8	13.9	19.9	18.8	47.6	60.9
WEMMERSHOEK	58 644	44.5	43.9	35.9	49.0	53.9	63.2
TOTAL STORED	898 221	179 711	187 880	211 782	274 342	484 503	654 371
% STORAGE		20.0	20.9	23.6	30.5	53.9	72.9

NOTES:

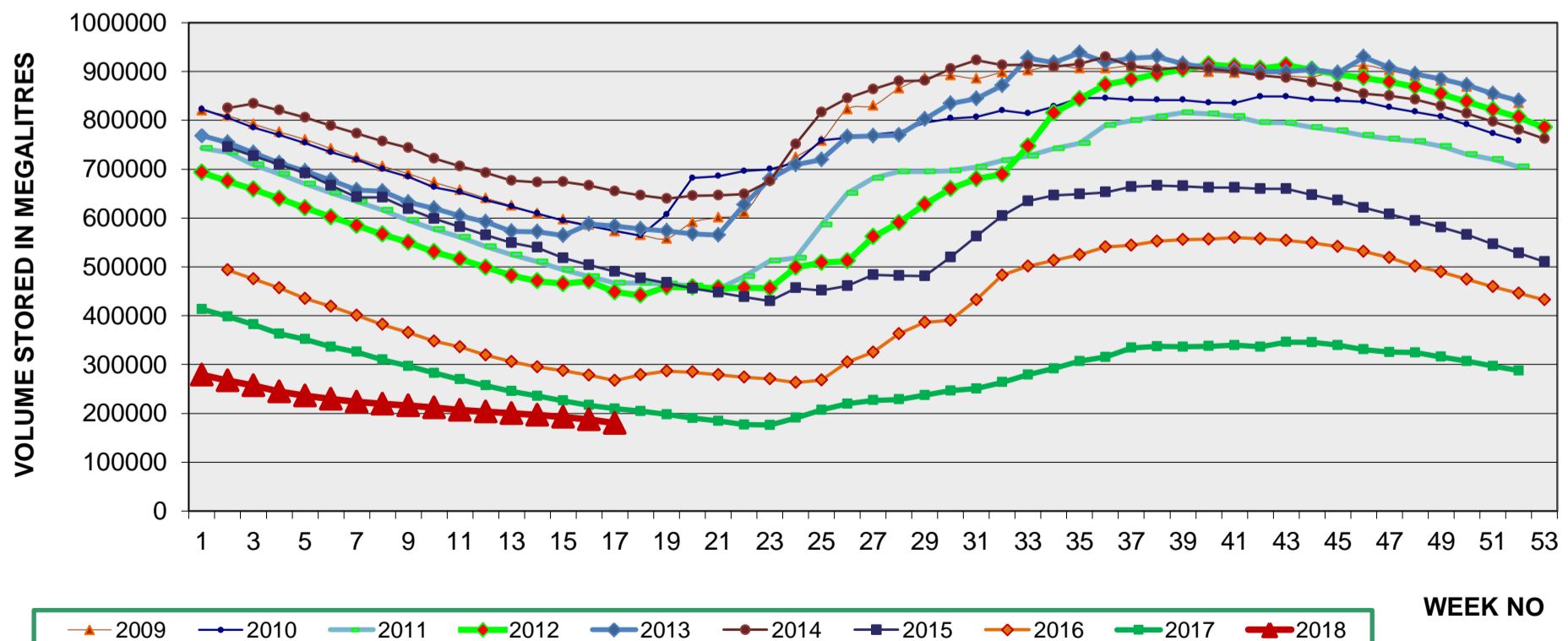
- Capacity of the major dams of the Western Cape Water Supply System is 99.6% and that of the minor dams 0.4% of the combined capacity of the major and minor dams. Kindly note that all the Major Dams show gross capacity.
- All figures are for 23 April for each year except for those in the second column, which gives the figures for the previous week of this year.
- The last 10% of a dam's water is difficult to use, the useable water in the dam is approximately 10% less than the dam level.



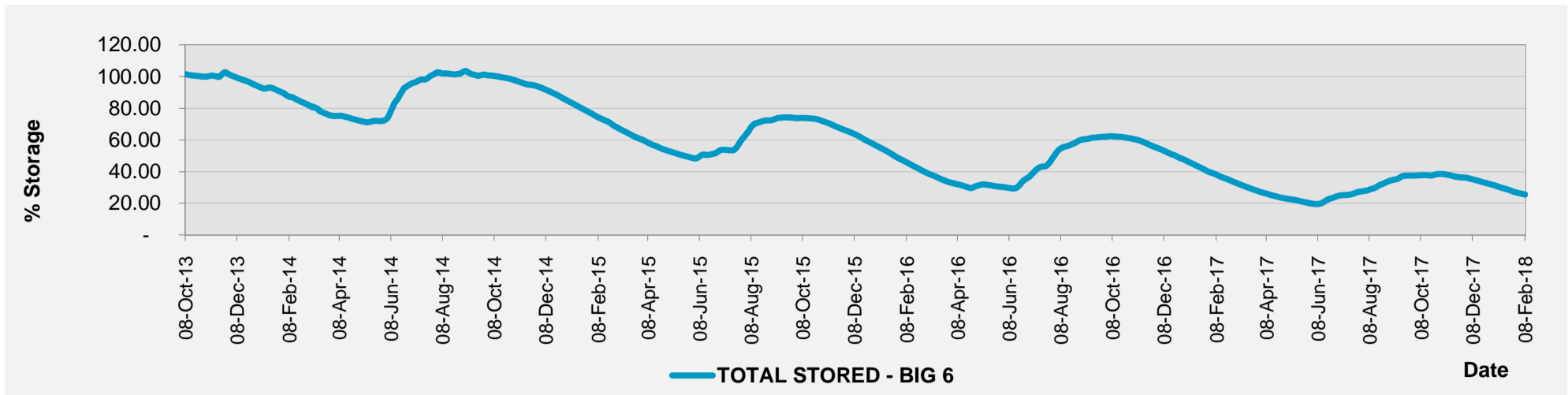
Water Stored in Minor Dams Within Cape Town

MINOR DAMS	STORAGE						
	CAPACITY	%	%	%	%	%	%
	MI	23 April 2018	Previous week	2017	2016	2015	2014
ALEXANDRA (Table Mountain)	126	60.8	56.6	30.8	25.4	5.6	47.3
DE VILLIERS (Table Mountain)	243	57.3	57.5	45.3	59.4	45.0	97.9
HELY-HUTCHINSON (Table Mountain)	925	70.1	75.2	98.8	55.3	0.0	30.5
KLEINPLAATS (Simon's Town)	1 368	38.8	39.4	42.1	31.5	27.3	55.7
LAND-EN-ZEEZICHT (Helderberg)	451	88.2	90.7	78.0	12.0	0.0	0.0
LEWIS GAY (Simon's Town)	182	58.4	56.4	14.3	1.5	68.5	37.4
VICTORIA (Table Mountain)	128	39.9	46.8	72.7	34.7	0.0	98.9
WOODHEAD (Table Mountain)	954	57.9	55.8	72.5	77.8	50.4	62.0

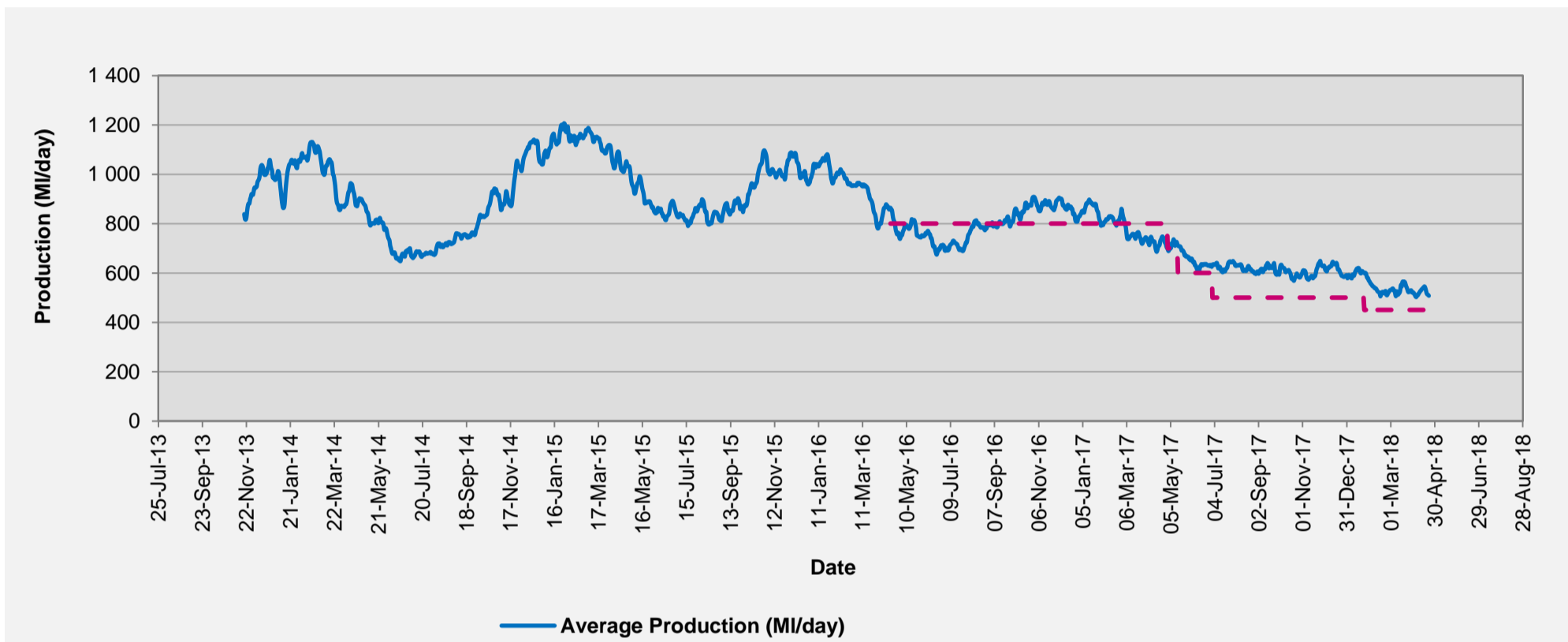
Ten Year Graph Indicating Volume of Water Stored in Major Dams Comprising Western Cape Water Supply System (WCWSS)



Percentage Water Stored in Major Dams (WCWSS)



CCT Daily Average Water Production (7 Day Avg)



CCT Water Quality Sample Pass Rate

Month	Water Quality Compliance (%)	Target (%)
Jan-17	99.63	98
Feb-17	99.64	98
Mar-17	99.67	98
Apr-17	99.67	98
May-17	99.71	98
Jun-17	99.65	98
Jul-17	99.62	98
Aug-17	99.59	98
Sep-17	99.57	98
Oct-17	99.49	98
Nov-17	99.44	98
Dec-17	99.43	98
Jan-18	99.38	98

Notes:

This table shows CCT drinking water quality compliance according to the South African National Standard 241:2015. Compliance, measured against all prescribed chemical and microbiological components, consistently exceeds the very high CCT target of 98%. (Overall compliance percentages of continuous sampling and analysis are released on a monthly basis. The latest available is for January).

Rainfall

RAINFALL (mm)	16-Apr	17-Apr	18-Apr	19-Apr	20-Apr	21-Apr	22-Apr	Apr	
								Total*	LT Average
Blackheath Upper	0.0	0.0	9.0	0.0	0.0	0.0	0.0	#VALUE!	47.6
Brooklands	0.0	0.0	15.0	0.0	0.0	0.0	0.0	#VALUE!	64.9
Newlands	0.0	1.0	16.5	0.0	0.0	0.0	0.0	#VALUE!	123.6
Steenbras	0.0	2.0	9.5	0.1	0.0	0.0	0.0	#VALUE!	79.4
Table Mountain (Woodhead)	0.0	2.6	22.5	0.0	0.0	0.0		#VALUE!	127.3
Theewaterskloof	0.0	0.0	1.1	0.0	0.0	0.0	0.0	#VALUE!	56.4
Tygerberg	0.0	0.9	7.6	0.0	0.0	0.0	0.0	#VALUE!	40.8
Voëlvlei	0.0	0.0	5.0	0.0	0.0	0.0	0.0	#VALUE!	45.1
Wemmershoek	0.0	2.0	36.6	0.0	0.0	0.0	0.0	#VALUE!	62.5
Wynberg	0.0	0.0	18.0	0.0	0.0	0.0	0.0	#VALUE!	83.3

Notes: *Total/cumulative rainfall for month indicated above
LT: Long Term