



Strengthening Collaboration in the Water Sector

Tabita Napakade

MCC

29 October 2008



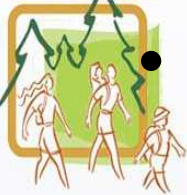
Background

- The IGR & Sector Collaboration Unit (upon the DDG: Regions' directive) undertook an exercise to assess the state of water sector collaboration at both national and provincial levels, and looking both water services and water resources functions
- The exercise started early this year and was completed in June 2008
- The exercise is also linked to one of the key outcomes of MSB III



Objectives of this exercise

- Identify & document collaborative structures currently in the sector
- Assess TORs, similarities, trends & areas of overlap or common interests
- Identify strong linkages and/or potential for merging or combining structures
- Develop proposals and recommendations to strengthen collaboration



Methodology

- No visits or face to face interviews, primarily a desk study
 - Relied on existing documents, emails and telephonic interviews
 - Contacted key knowledgeable people in each region
 - Followed up in the latter part of the study with a small (telephonic) survey to probe certain key strategic areas
 - We did not audit any of the information: took it at face value!



Key outputs and deliverables

- Document, for the first time, all of the provincial & national existing collaboration structures (both WS&WR)
- Document, water resources & services collaborative mechanisms
- Analysed trends, themes and important issues
- Developed recommendations to improve & strengthen collaboration at national and provincial levels



Provincial collaborative structures: themes, trends, issues

- There are effective collaborative structures in place in 8 provinces
- Statutory or non statutory?
 - Only WATSAN & NC IGR Water Forum statutory in nature
 - IRFA provides some interesting opportunities (and some provinces are pursuing these e.g. NC)
- Collaboration is a moving target:
 - Structures can and will change!
 - Significant time investment is needed to keep them vibrant



Provincial collaborative structures: themes, trends, issues



- There are major differences in the design of the structures to reflect provincial differences and preferences
- The degree of formality of structures varies significantly
- Some provinces have a plethora of water resources structures in place, others have almost none
- Only one PLC is functioning effectively (WC)



Some examples

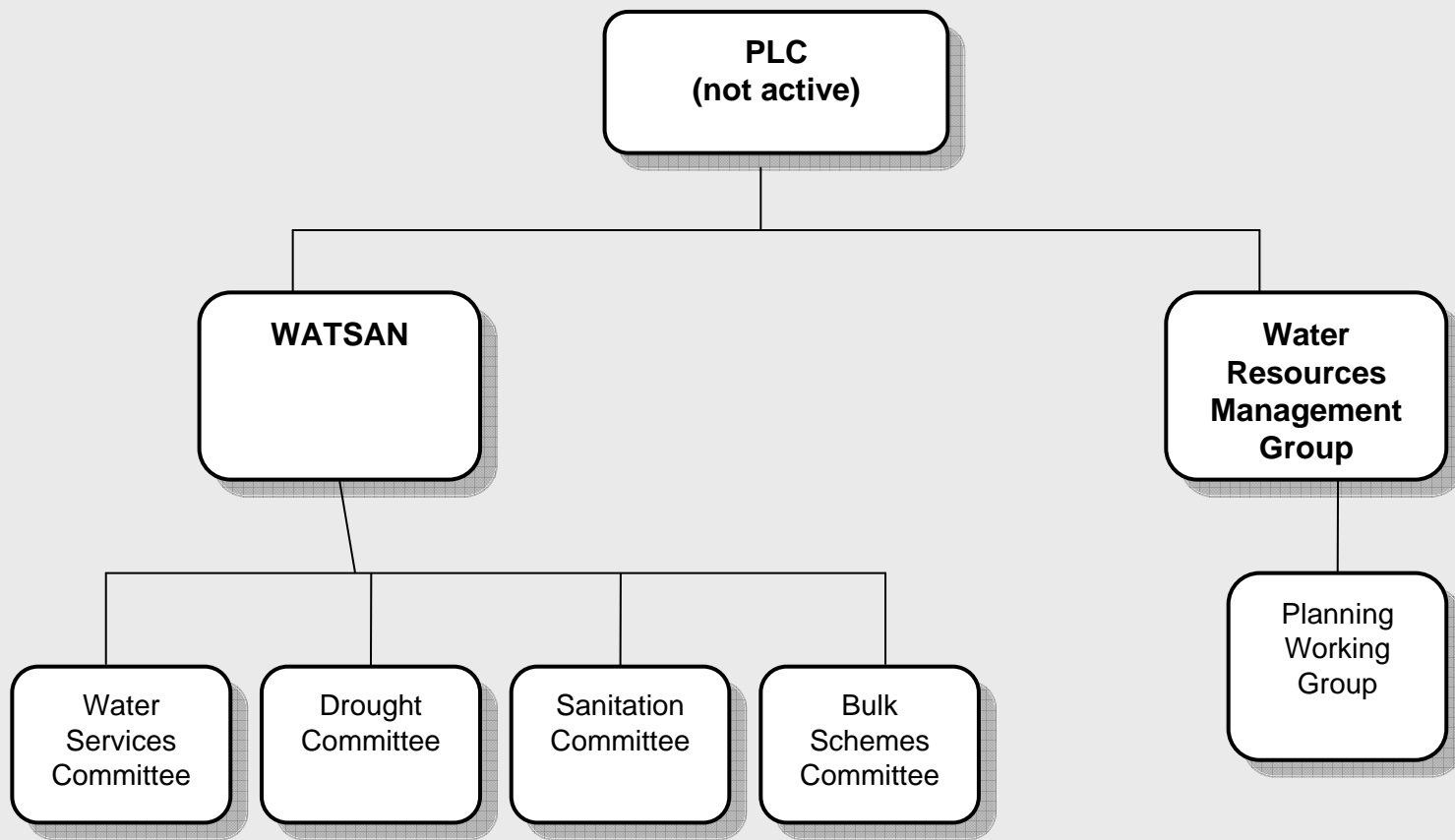


Figure 1: KwaZulu Natal Collaborative Structure

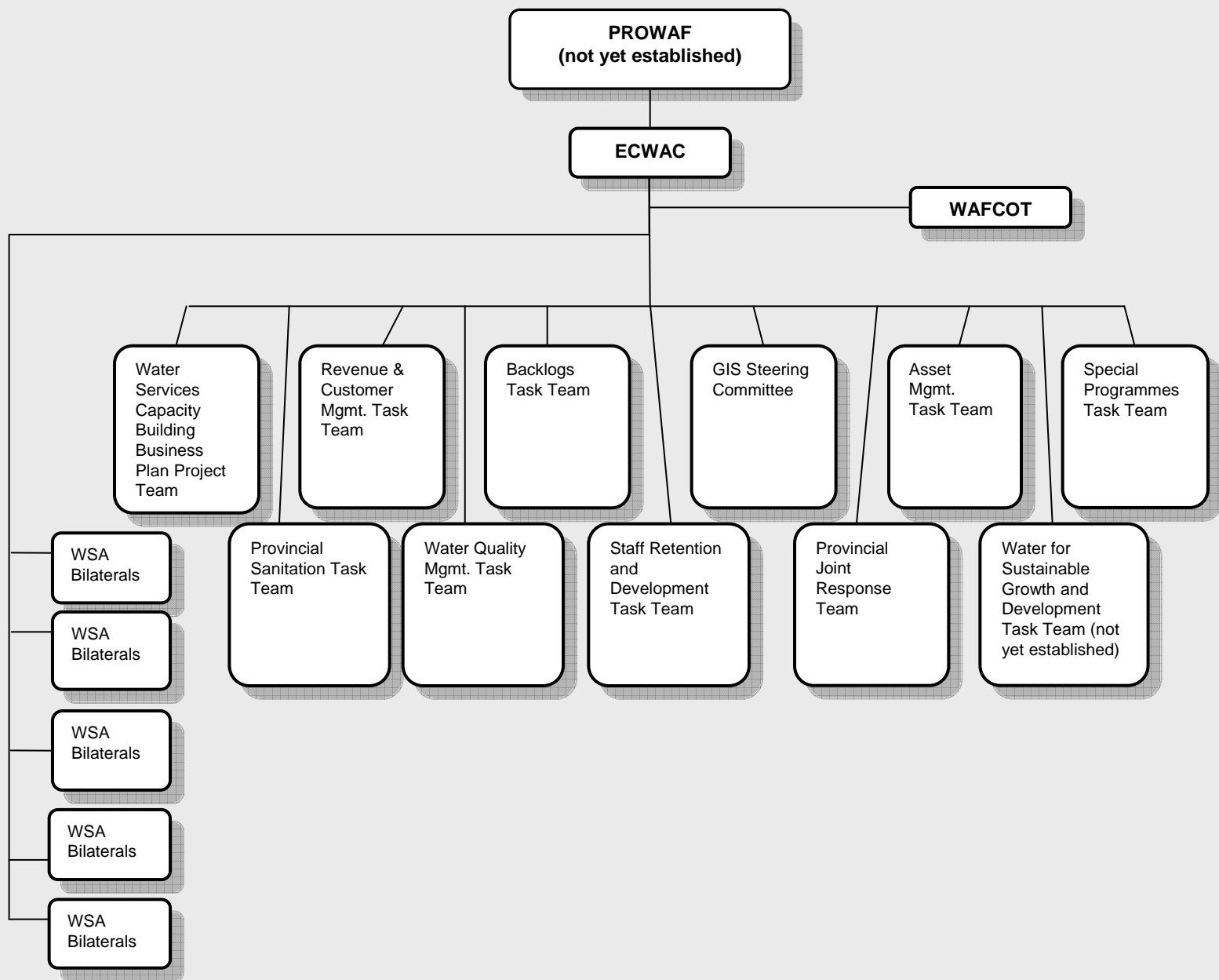


Figure 2: Eastern Cape Collaborative Structure

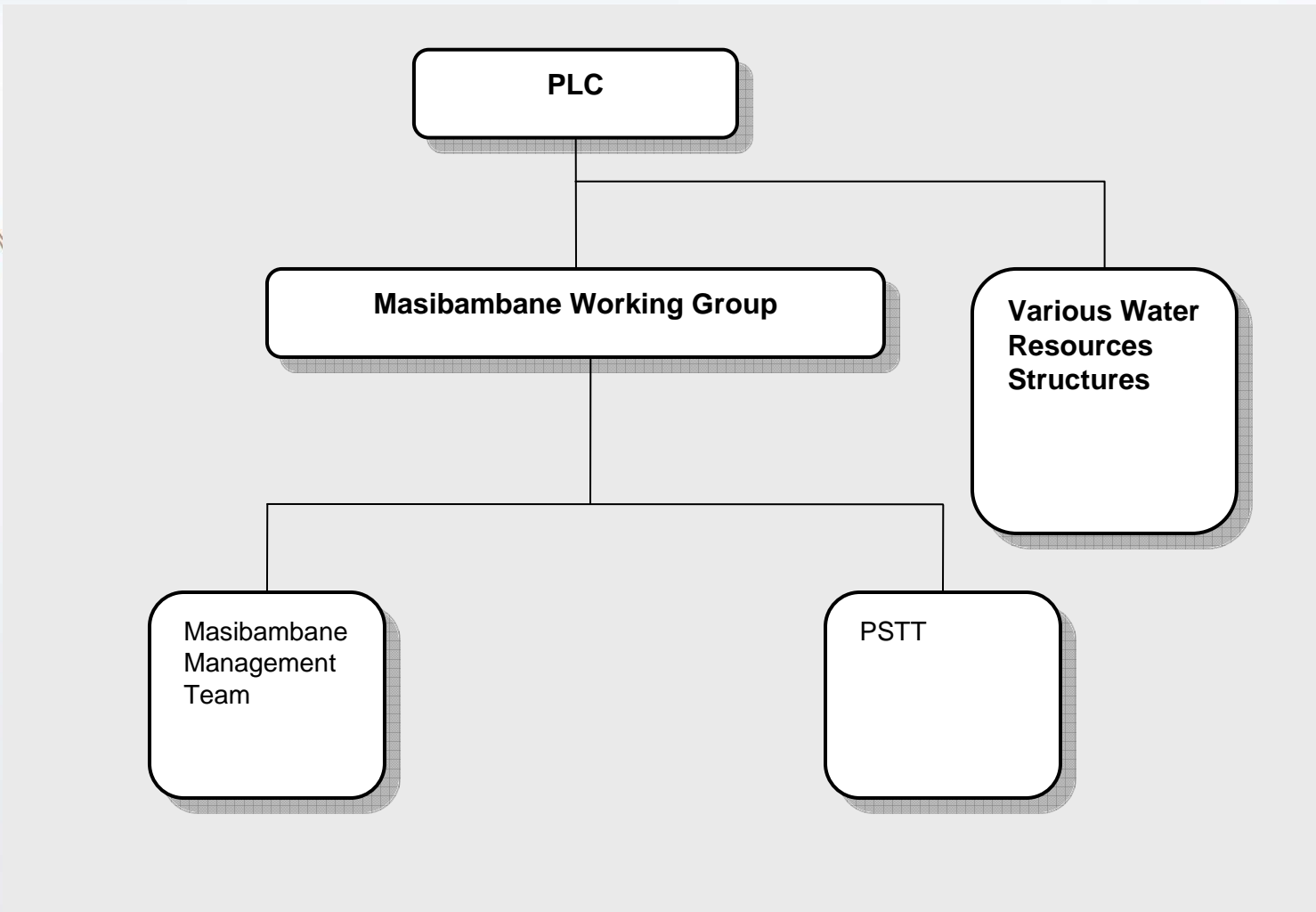
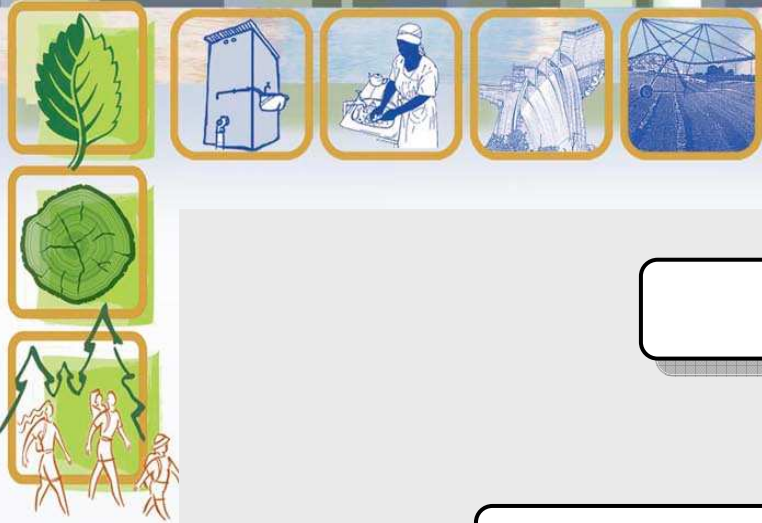


Figure 3: Western Cape Collaborative Structure

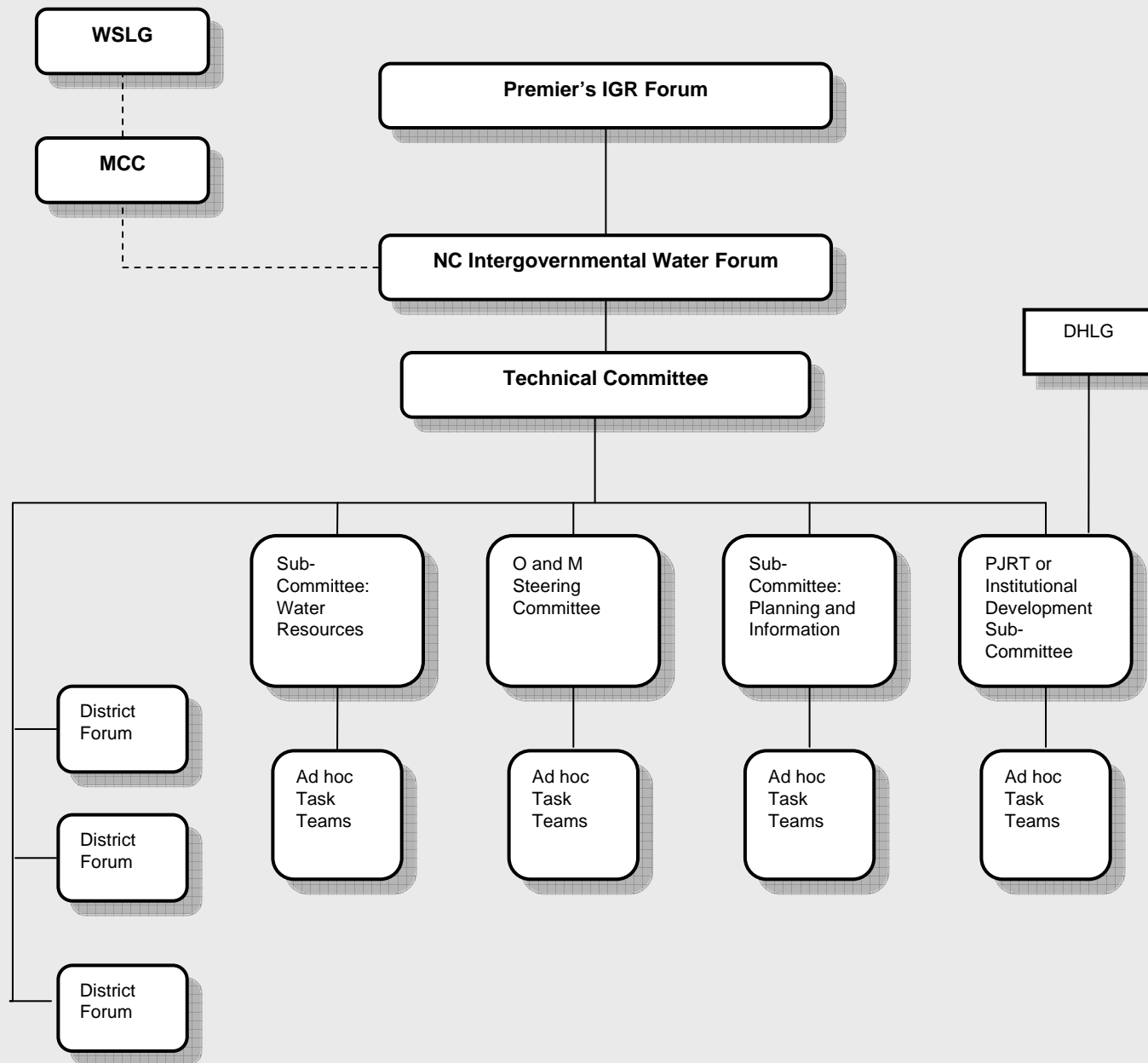


Figure 4: Northern Cape Collaborative Structure

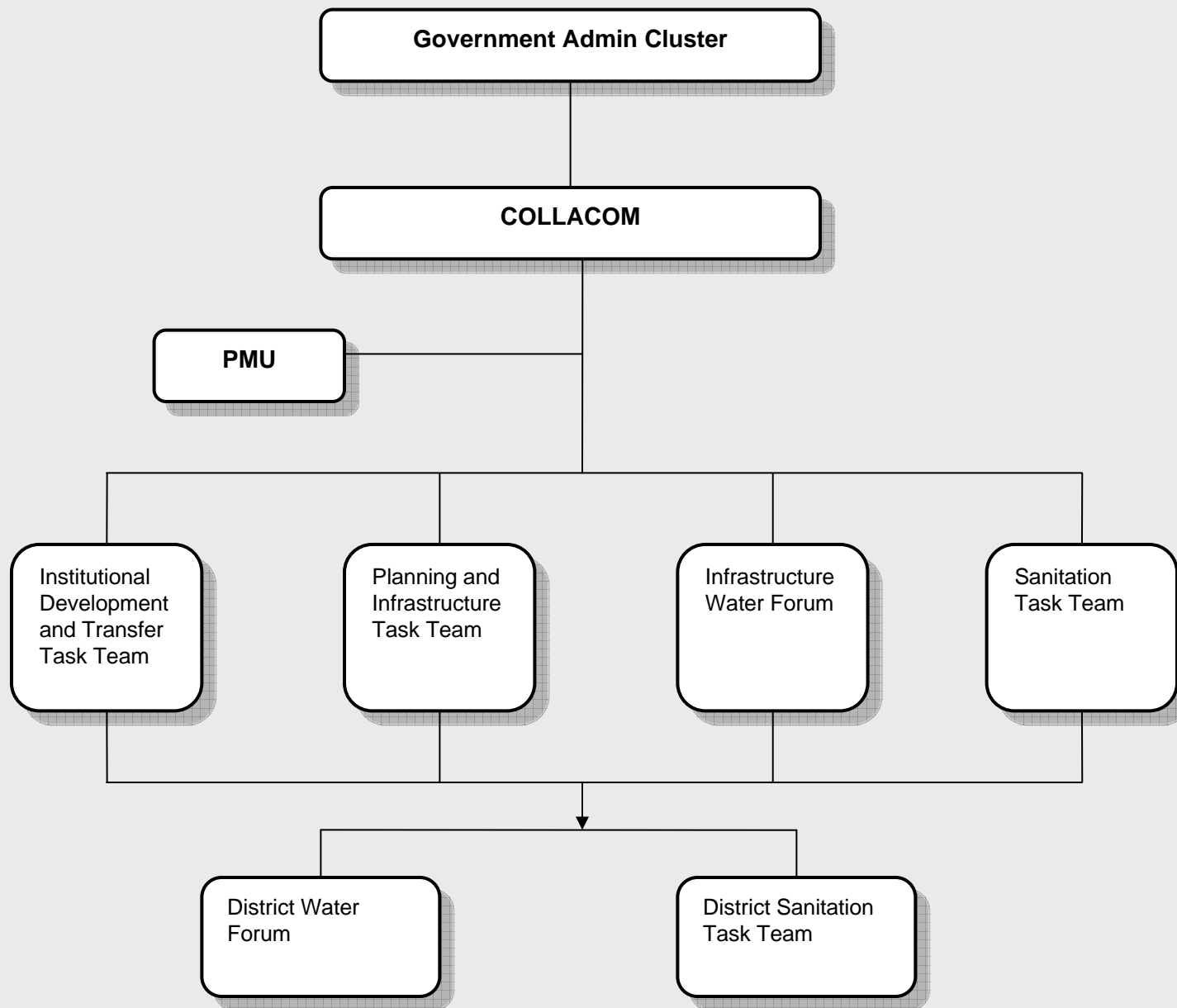


Figure 5: Limpopo Collaborative Structure

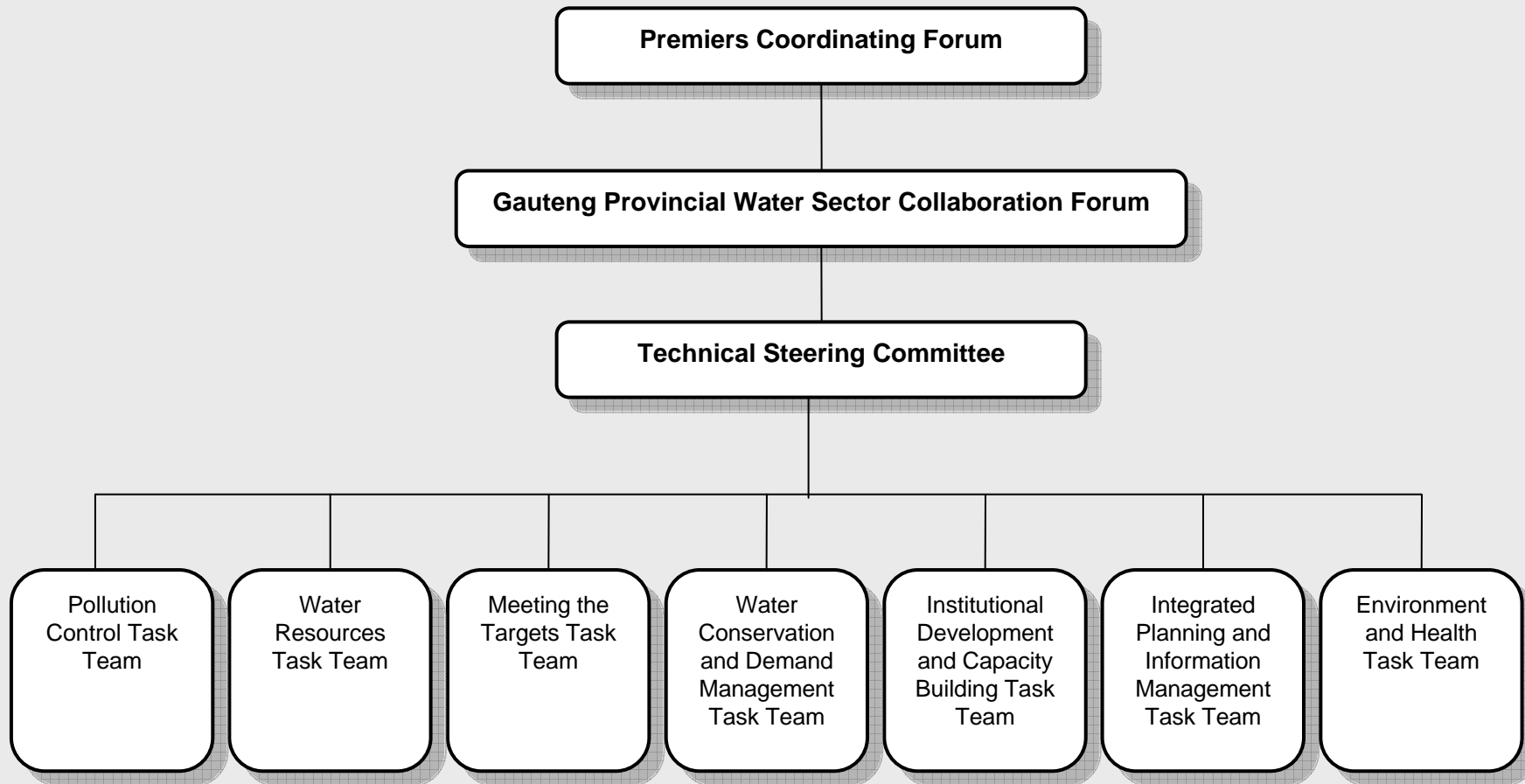
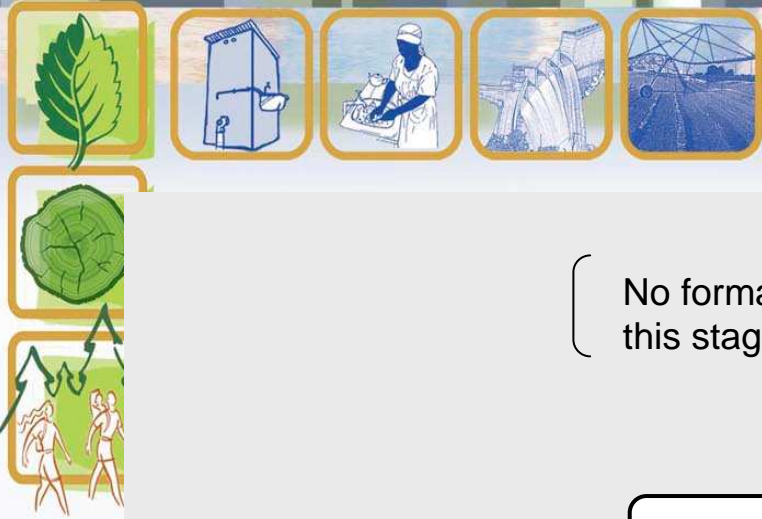


Figure 6: Gauteng Collaborative Structure



(No formal link to provincial structures at this stage.)

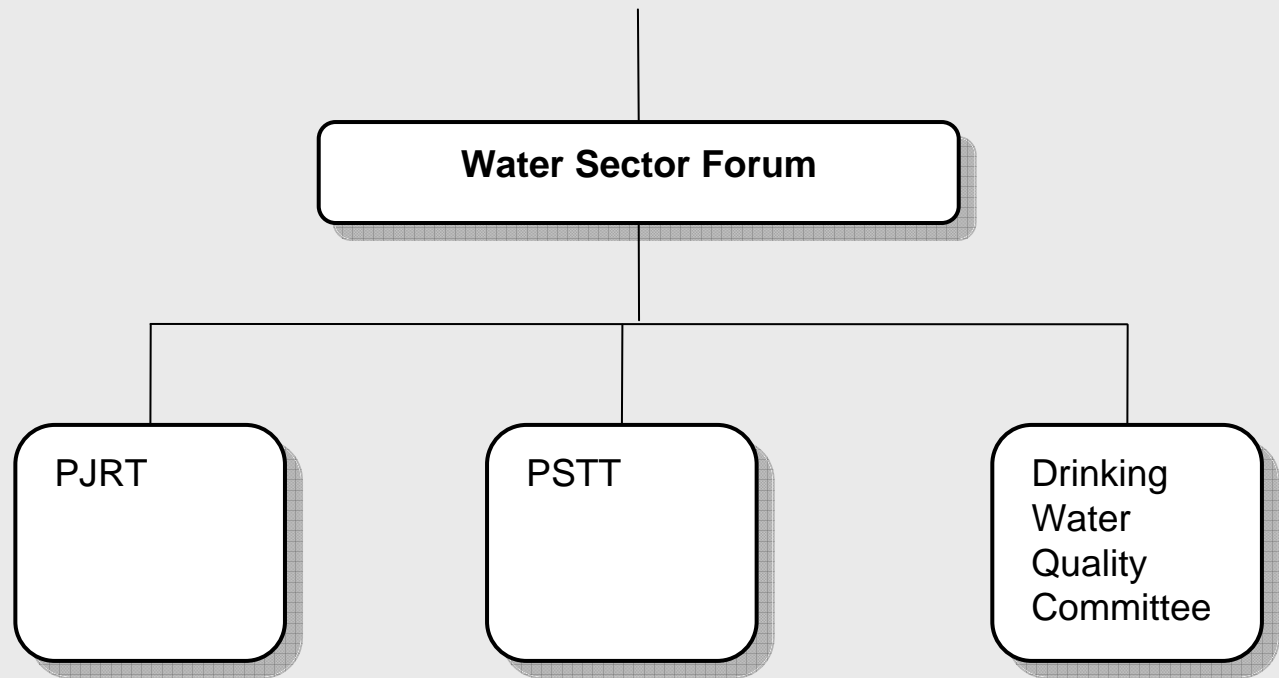


Figure 7: Free State Collaborative Structure

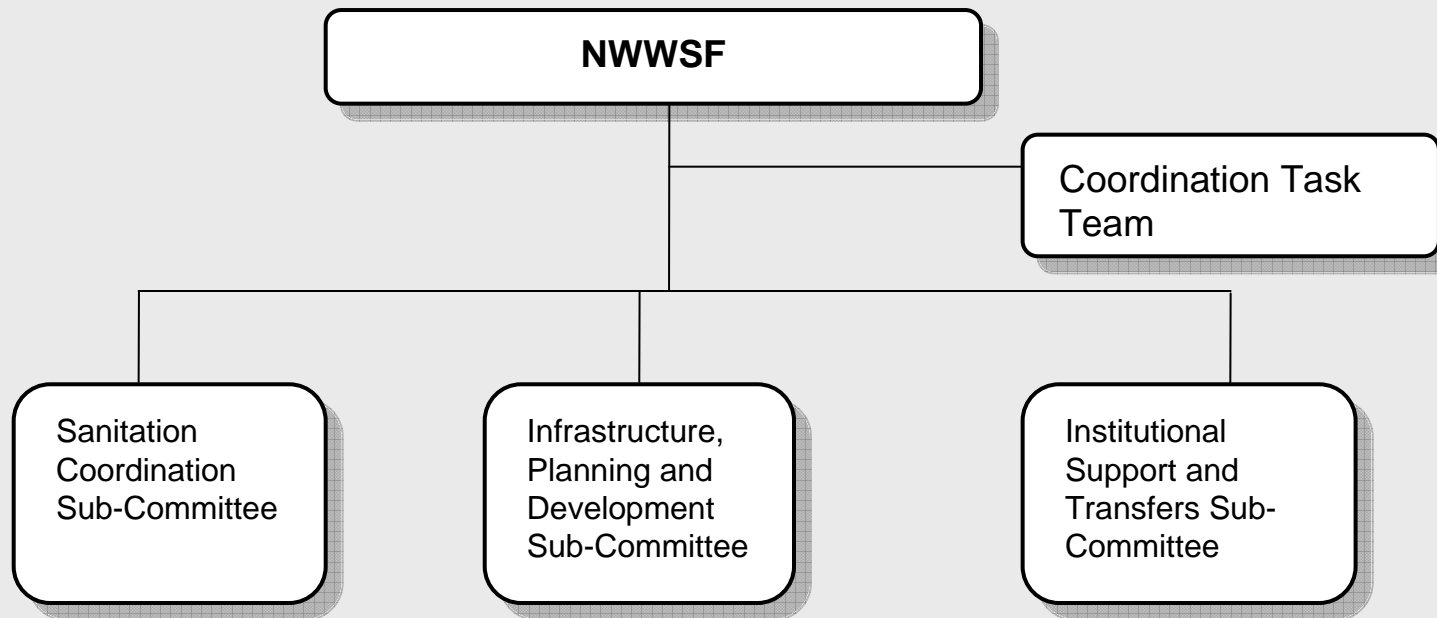


Figure 8: North West Collaborative Structure



Collaboration at National level



WSLG plays a key role and is currently under review

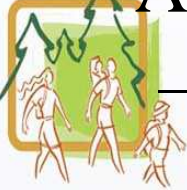
- In spite of a rich array of water resource collaborative structures at the provincial level, there appears to be almost nothing at the national level
- At the Ministerial level:
 - Water Minmec is not effective



Feedback from Provincial survey



• Attendance:



- WSAs: KZN, Limpopo in excess of 75%, some less than 50%
- SALGA: attendance and role varies dramatically
- Government Departments: DLG generally attend, DEA, D0H, DoA, DoE, DLA, DME varies
- Water Boards: attend most (where relevant)
- Political representatives: in Limpopo, EC and WC
- Civil society: active in most provinces
- Organised private sector: do not currently participate,



Feedback from Provincial survey

- Effectiveness of structures?
 - Moderate to very: WC, Gauteng, NC, KZN, EC
 - Partially: FS, Limpopo
 - Not: NW
- Are structures addressing the following strategic issues?
 - WFGD: mixed response – some uncertainty
 - WS/WR integration: most provinces
 - WSP support: most provinces
 - Regulation: generally no
 - Links to provincial government: most provinces



Feedback from Provincial survey

- Key challenges for collaborative structures:
 - Lack of capacity/skills in DWAF
 - Lack of capacity/skills in municipalities
 - Poor attendance of municipalities
 - Ensuring action and follow through
 - Attendees too junior
 - Water services/water resource interface
 - Subcommittees, working groups not effective
 - Interface/communications with DWAF National



Guiding Principles for Review

- Alignment
 - Structures should be aligned to ensure smooth & logical information flow and decision making
 - Ideally must ensure that “Right people discuss pertinent issues at the appropriate level”
 - Underpinned by WFGD strategic goals
- Restructuring
 - Structures must be presented as water sector without WS &WR division
- Political oversight
 - Create mechanisms for involving political leadership
- Lesson learning potential
 - Ensure value by promoting inter-sectoral lessons sharing
- Public Private sector partnership
 - Get the private sector to be involved where possible/appropriate



Recommendations

- National:

- Review the alternative mechanisms of inter-sphere political engagement e.g. Joint MinMec, Inter-Ministerial Forum
- Utilise National & Provincial Summits to promote broader participation
- Accelerate review of WSLG to incorporate water resources aspects, broad but high level sector participation, and alignment with other structures



Recommendations



• Provincial

- Each province should consider the option of establishing a formal IGR structure (without being prescriptive) linking to provincial IGR structures e.g. NC set an example, WC has recently launched its WSLG and MP will be launching its WS IGR Forum
- Some guidelines, proforma (e.g. ToRs), structural designs etc. on collaboration should be documented and disseminated
- A tool for measuring effectiveness should be considered. This should probably be based on self assessment, as per the EC example.
- Further opportunities for WS/WR integration of structures should be explored in each province



The end: thank you for your attention!