



Dept of Water
Affairs & Forestry



Learning through Collaboration in the Water Services Sector

Presentation to WSSLG
Ndala Duma
7 June 2006



Progress Overview

- WIN Lessons Series (7 complete, 7 further identified)
- Web site/Portal
- Intelligent Mailing Lists – (Sector Collaboration, S78, etc)
- Disseminating & sharing the findings of the Sector Collaboration Review
- Bringing in the Harvest: tangible delivery
- People to People learning: tangible benefit to EC/NC
- Enabling learning in priority programmes
 - District WS Managers Forum
 - DWAF: National Sanitation Programme
 - S78 learning
- Partner's Forum – March 2006

Progress Overview

- Tangible increase in awareness + practical importance of knowledge sharing in the sector
- WRC Accountability and Support
- Growing the WIN Unit at WRC
- Strengthening Relationships with IRC
- Growth in funding (SWISS) & Budget expenditure
- SADC, African & international links
 - Steams of Knowledge
 - Strengthening Relationships with IRC
 - IRC learning alliance (LG Capacity Building Symposium)
 - Uganda – planning SA Exchange on SWAP experiences
- In Nursery phase:-
 - Field Notes (Zululand IT Planning Tool, uMjindi farm dweller sanitation)
 - Quarterly Newsletter

FOCUS AREAS – BP 2005-8

1

Documenting Lessons
Reviews
WIN Lessons Series
WIN Field notes

2

Knowledge Dissemination
Portal: WIN & own sites, access to other domains
Intelligent Mailing List
WIN Quarterly Publication List
Reading List

Building the Network
5 Marketing Coordination
Partner Synergy
Institutionalising KS

Creating A Learning Culture
People 2 People Learning
Forums of reflection
Learning journeys - site visits, exchanges
Safe spaces (Chatham House Rules)

3

Capacity Building & Support
Training
Action learning
Workshops / seminars
Working alongside

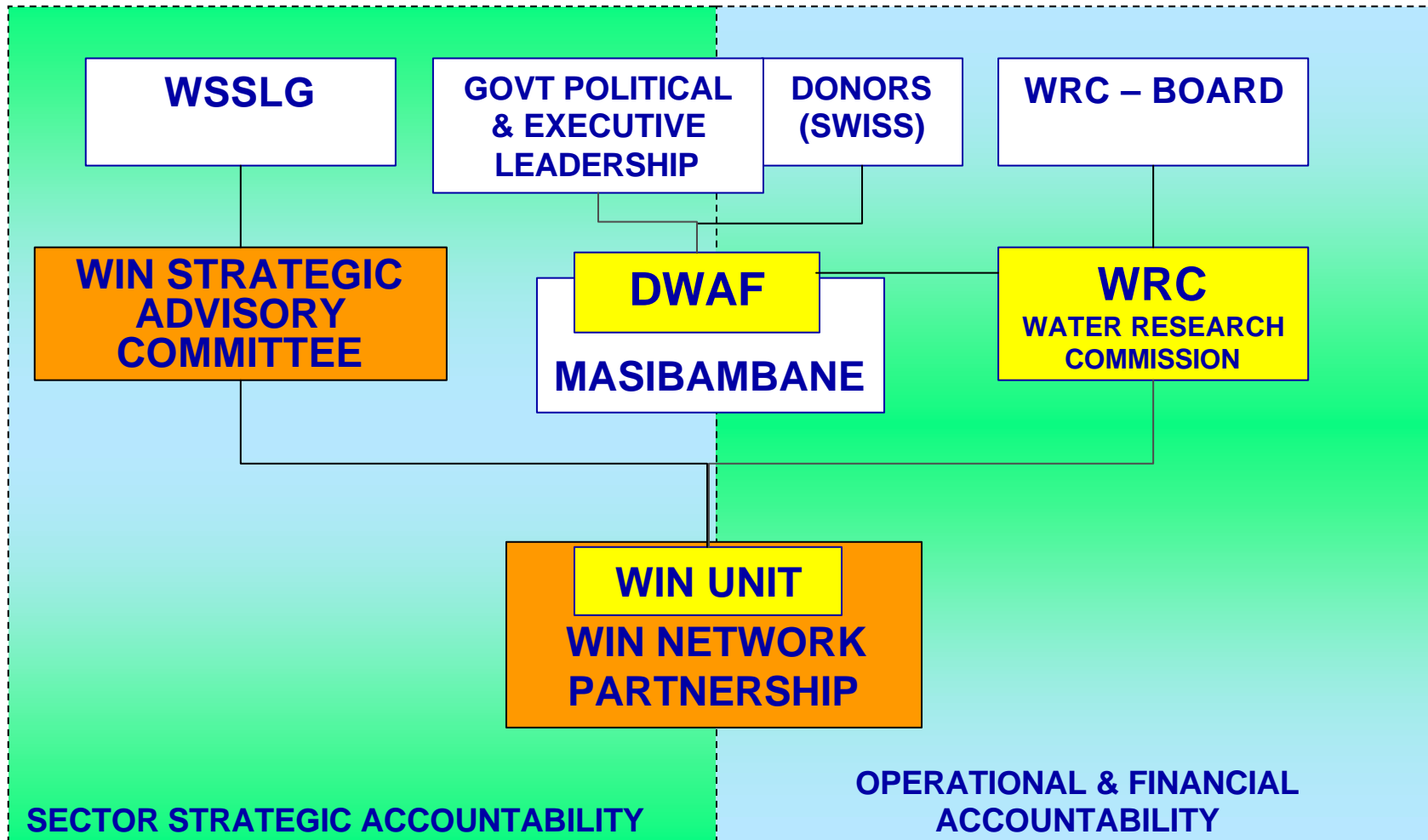
4

Critical Success Factors

2006/7

- Well functioning and used website
 - ✓ Defining competitive edge and role it fulfils
- Building the network
- WIN unit to demonstrate value into quality products
- Working in a manner that develops capacity of network partners
- Identifying, clarifying and strengthening roles of partnerships
- Clarity on WIN core group (WIN support group) and products and services
- Define a role and development of strategy for WIN in the SADC Regional and African projects
- Sector ownership of WIN
 - ✓ Sector comfort around governance arrangement

Governance, Management & Accountability



Towards a learning sector

- Collaboration has been a stimulus and enabler for lesson learning
- Learning becomes possible when everyone realises that it is not a rocket science but can happen through normal course of events.
- The challenge is to maximise these opportunities & build a culture of learning

Issues for consideration by WSSLG

- Governance and Institutional arrangements
 - Strategic Advisory Committee Members
 - DWAF
 - KS Programme (SALGA / dplg)
 - WISA
 - NGO
 - LG Resource Centre (DBSA)
 - Donors
- The Network partnership to meet the needs of the sector
- WIN portal (broader ownership) & ongoing training
- WIN Quarterly publication: options available
- Feed back