



MAINSTREAMING HIV/AIDS

WSSLG HIV/AIDS Core Group

07 June 2006

Thoko Sigwaza

Overall Objective

- **Understanding the impact & implications of HIV/AIDS in the Sector and determining the Sector's contribution in addressing the epidemic**
 - **Awareness raising**
 - **Ownership and participation**
 - **Networking and knowledge sharing**
 - **Building on what already exists**

3 Pronged Approach

Mainstreaming HIV/AIDs response thru Policies & Practice

Prioritisation in Planning, MIG & service delivery, funding, incentives,
Database, indicators & reporting, benchmarking & lesson sharing
Alignment across service sectors & LG programs

Appropriate Services to HIV/AIDs Survivors & Indigent

Mapping prevalence, indigent policies, targeted FBS with focus on
HIV/AIDs, re-defining service levels & allowance, sponsorships,
working with NGOs & CBOs

Addressing HIV/AIDs within Water Sector Structures

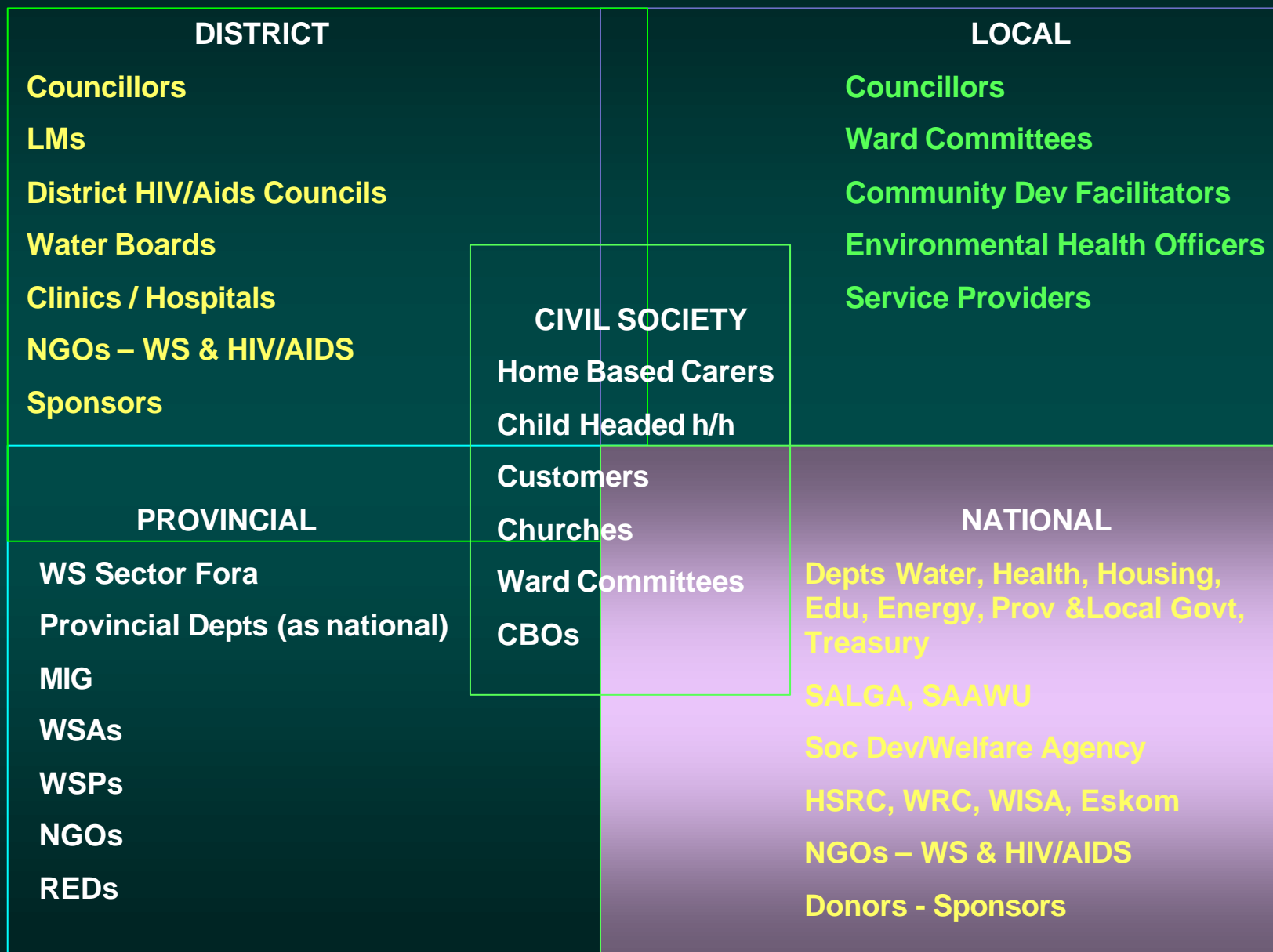
Impact assessments, Organisational policies & plans, Medical
treatment & counselling, HRD planning, best practice promotion,
Sector based interventions, funding advocacy

2 site pilots

Advocacy & awareness

Implementation - strategies & plans

Collaboration in all Spheres



Steps Forward

- **Situational assessment and gap analysis**
- **Prevalence mapping**
- **Pilot 2 WSA's (rural/urban)**
- **Alignment with dplg implementation plan**
- **Reviewing suite of policies to ensure HIV/AIDS focus & prioritization**
- **Look at MIG & FBS vs. effects of HIV/AIDS**
- **Best model for workplace policy**

Steps Forward

- Establish knowledge networking
- Mainstreaming HIV/AIDS focus in planning
- Coordinated awareness campaign & consistent messages
- Champions
 - Mainstreaming – DWAF
 - Service Delivery – DWAF / SALGA
 - Workplace Policy - SAAWU

WSSLG members to:

- **Comment on this approach**
- **Share ideas on what is currently happening & what should be done**
- **Agree on champions**
- **Indicate how this impacts on you & what you *will* do**