

Multiple Use Water Services – ‘MUS’

Integrating...
....where integration matters





A MUS partnership

**2003 South Africa:
International Symposium**

**‘Water, poverty, and productive uses of
water at the household level’**

**co-hosted by DWAF, IRC, NRI, and
IWMI**





A MUS partnership



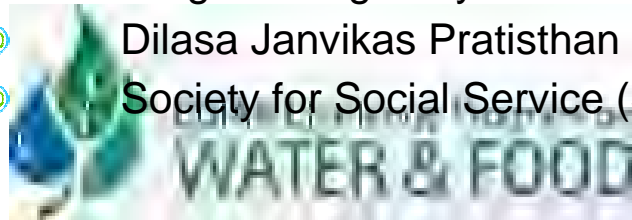
- 1** Andes (Colombia & Bolivia)
- 2** Limpopo (Zimbabwe & South Africa)
- 3** Nile (Ethiopia)
- 4** Indus-Ganges (India & Nepal)
- 5** Mekong (Thailand)

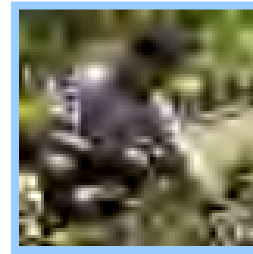
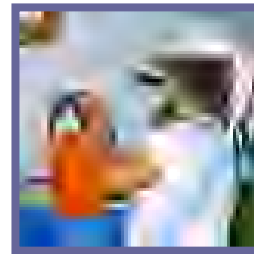
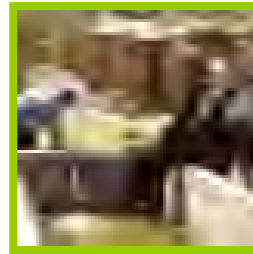
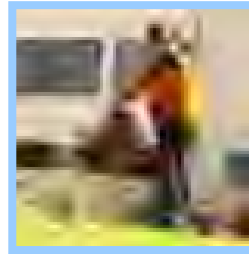


A MUS partnership

Part of Challenge Program Water and Food

- › International Water Management Institute (IWMI)
- › IRC International Water and Sanitation Centre
- › International Development Enterprises (IDE)
- › Association for Water and Rural Development (AWARD)
- › Local Wisdom Networks Thailand
- › Khon Kaen University
- › Catholic Relief Services (CRS)
- › Institute for Water and Sanitation Development (IWSD)
- › Mvuramanzi Trust
- › Instituto de Investigación y Desarrollo en Agua Potable, Saneamiento Básico y Conservación de Recursos Hídricos (CINARA)
- › Centro Andino para la Gestión y Uso de Agua (Centro AGUA)
- › Programa Aguatuya
- › Dilasa Janvikas Pratisthan Sanstha (Dilasa)
- › Society for Social Service (SSSP)





Multiple Use Water Services: What and Why ?





Addressing people's multiple water needs

**Multiple-use water services
take poor women's and
men's multiple water needs
as a starting point**





Dissolving sectoral boundaries

**Multiple-use water services
overcome compartmentalized
single-use planning within the
water sector**





**Roberto Lenton,
TEC, GWP:**

“It is we, the water professionals, who have created the barriers between us, and it is we who must break them down.”





Integrated, needs-based design

- ③ **Domestic - plus**
- ③ **Productive - plus**
- ③ **Multiple-use by design**





**Ede Jorge Ijjasz,
Global Manager
Water and Sanitation
Project, World Bank**



“ We cannot do rural water supply projects without considering productive uses.....we should realise this in the same way that we learnt that sanitation had to be integrated with water supply in the 1980s.”





**Barbara Schreiner,
DWAF, South Africa**



**“We are taking IWRM in essence
another step and looking at
IWRM’s potential for poverty
eradication”**





Theo Maluleke, AWARD Ward 16 Bushbuckridge



“Integrating planning for multiple-use water services into the IDP”.





Advancing

the Millennium Development Goals

1. Improving more dimensions of women's and men's wellbeing

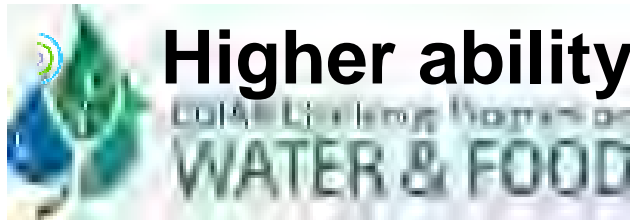
- Ⓜ **alleviating drudgery; food, income; health; gender equity**

2. Enhancing scheme sustainability

- Ⓜ **Avoiding damage and distortion by 'unplanned' uses**

- Ⓜ **Building on community ownership**

- Ⓜ **Higher ability and willingness to pay**





Advancing

the Millennium Development Goals

3. Using water more equitably

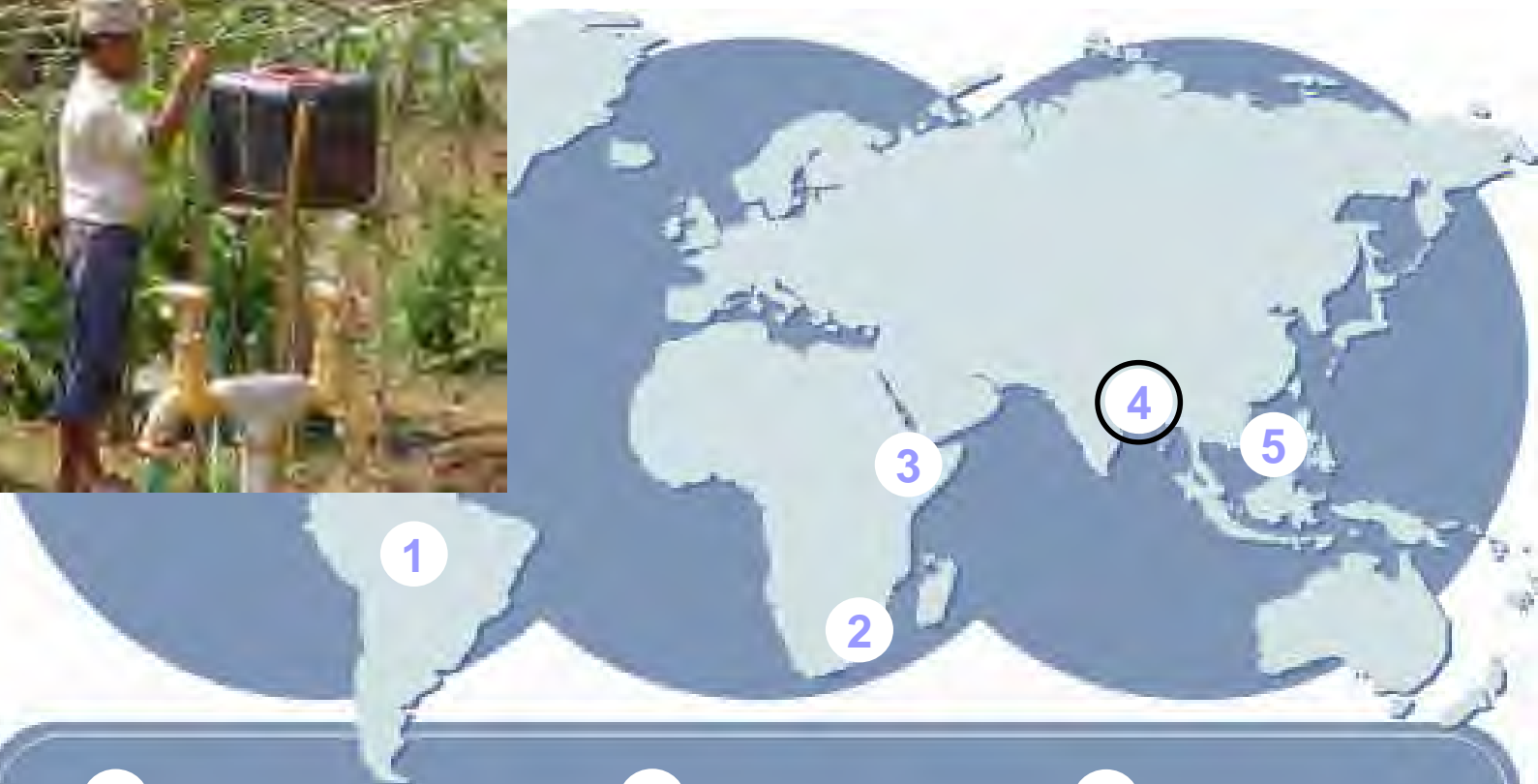
- ④ **Ensuring water for basic domestic *and* productive water needs**
- ④ **Integrating multiple sources; increasing water productivity: ‘more use per drop’**

4. At no or low incremental technology costs, but at higher costs for needs-based participatory planning





Community level: Nepal



1 Andes (Colombia & Bolivia)

2 Limpopo (Zimbabwe & South Africa)

3 Nile (Ethiopia)

4 Indus-Ganges (India & Nepal)

5 Mekong (Thailand)



Multiple Use Water Services by Design

- ④ Protected spring
- ④ Plastic pipe conveyance
- ④ Drinking water tank, to pipe stands
- ④ Overflow to irrigation tank
- ④ Distribution to irrigation offtakes













Bottom-up Upscaling: Farmers Wisdom Network Thailand



1 Andes (Colombia & Bolivia)

2 Limpopo (Zimbabwe & South Africa)

3 Nile (Ethiopia)

4 Indus-Ganges (India & Nepal)

5 Mekong (Thailand)



Farmers' wisdom networks

Bottom-up testing and upscaling of multiple water uses for economic sufficiency in different ecologies





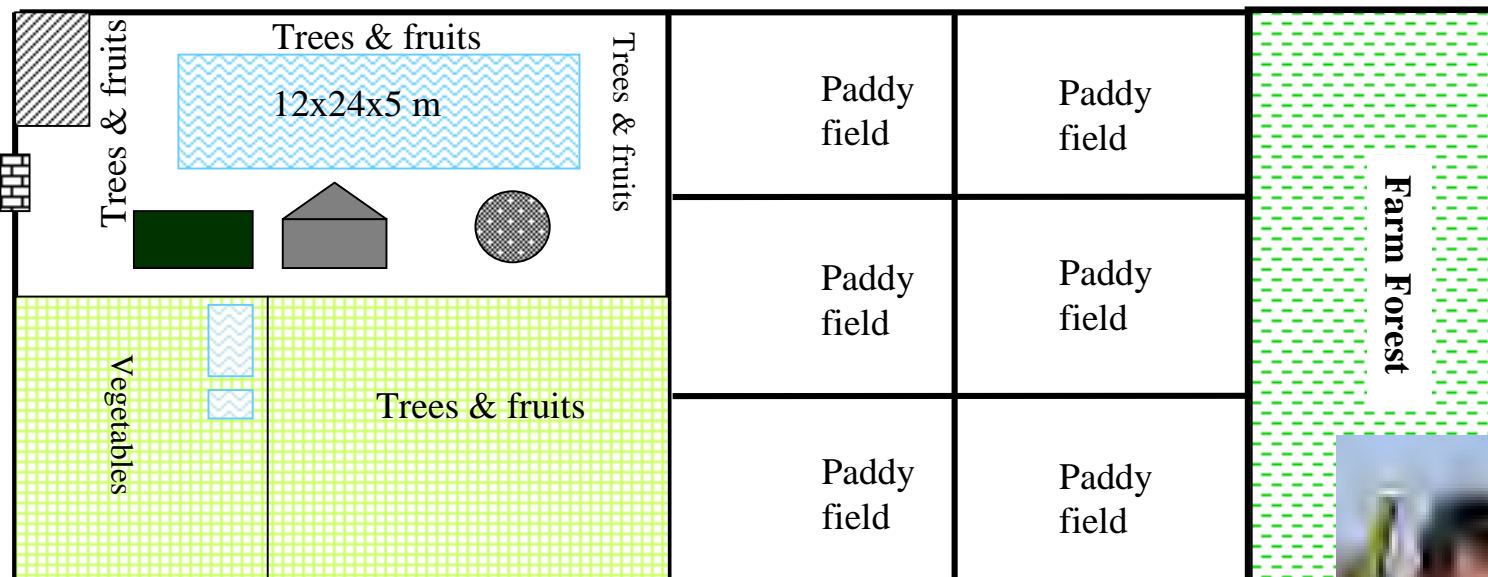
- Multiple sources,
multiple uses,
quantity and quality,
seasons



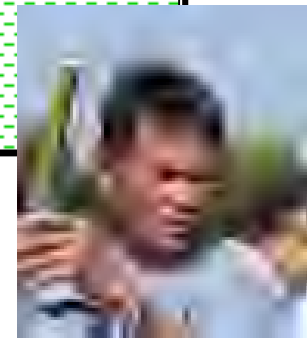


An example layout of successful practices

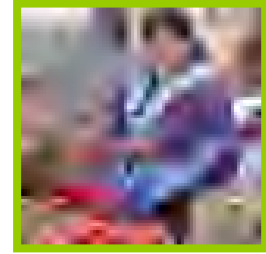
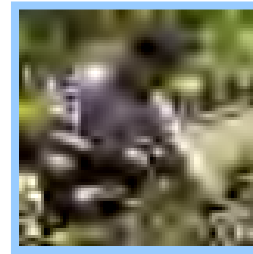
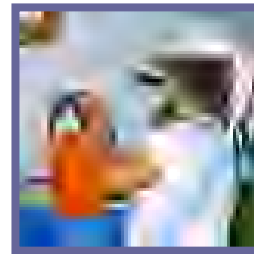
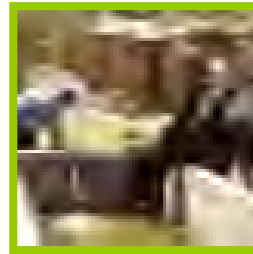
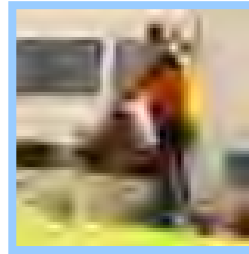
Mr. Saman Piyawong's plot layout at Kandong, Buriram



- livestock
- door
- Frog farm
- Nursery



Total area 2 ha ; ponds, paddy fields; integrated farm; and forest



Thank You



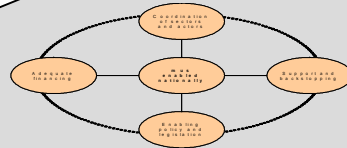
www.musproject.net

Research Report 98: www.iwmi.org



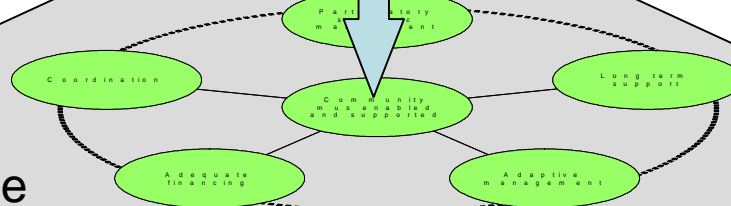


National



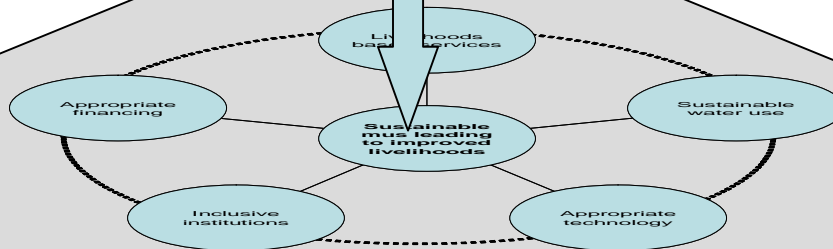
Flows of information and resources

Intermediate



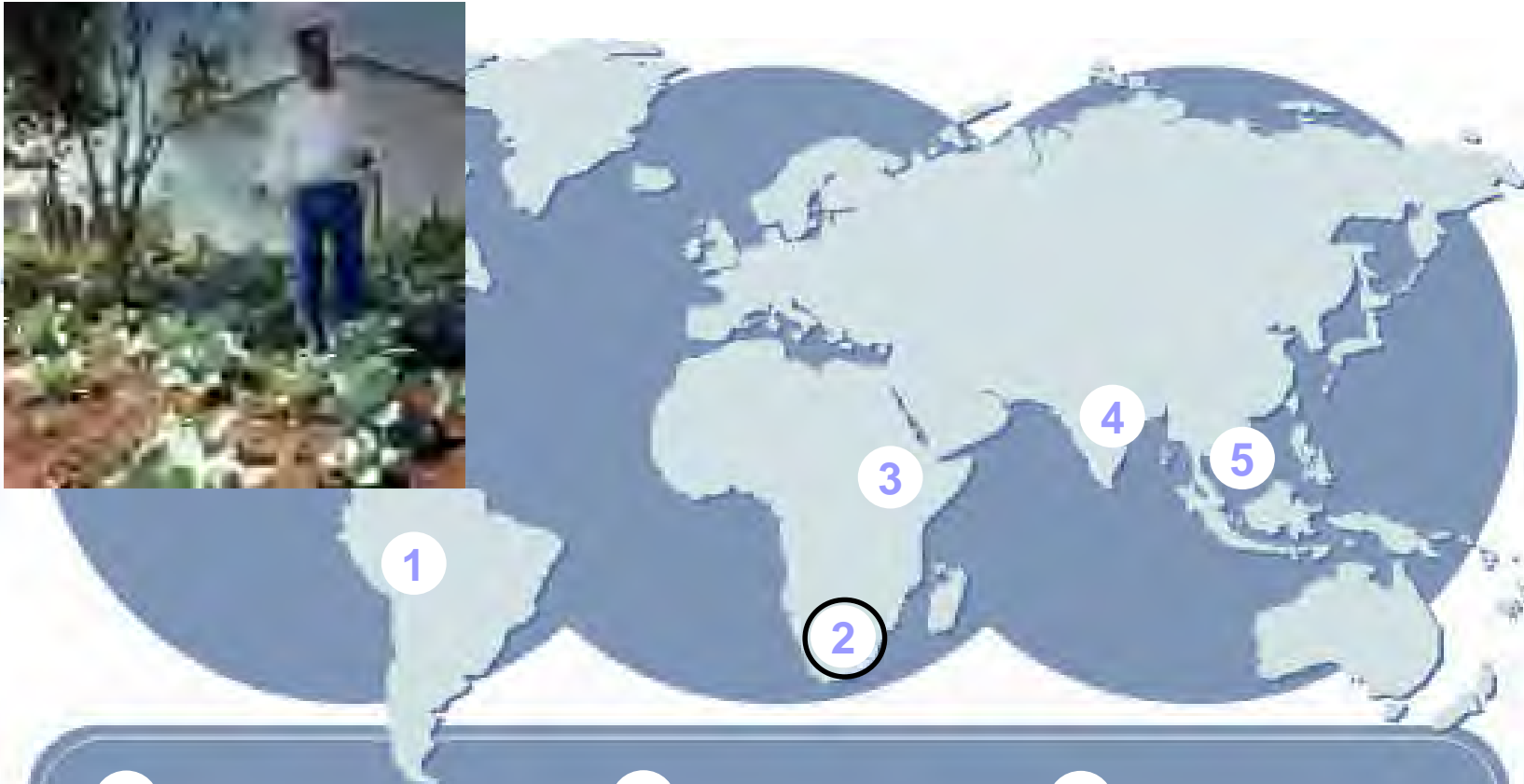
Flows of information and resources

Community





Upscaling Government South Africa



1 Andes (Colombia & Bolivia)

2 Limpopo (Zimbabwe & South Africa)

3 Nile (Ethiopia)

4 Indus-Ganges (India & Nepal)

5 Mekong (Thailand)



Scaling up multiple use services through municipalities

- ④ **Developing a replicable methodology for participatory planning for multiple use water services integrated in the IDP**





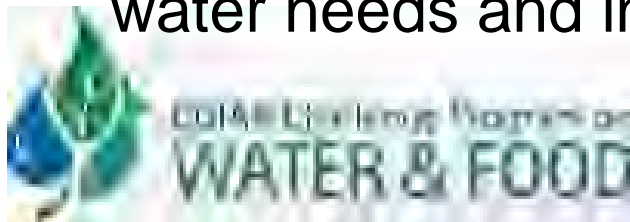
Gender in domestic and productive uses





Planning methodology in Bushbuckridge Municipality

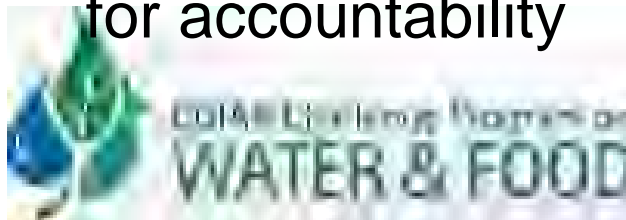
- ④ **Building capacity** of officials and community members in understanding water in livelihoods
- ④ Involving multiple stakeholders in **participatory assessments** at ward level
- ④ Establishing and facilitating a **multi-stakeholder platform** for collective analysis and planning at ward level (community reps, municipality, tribal authorities, DWAF, Agriculture, Health and Social Development)
- ④ Developing **holistic strategies** that address multiple water needs and integrating into IDPs and sectoral plans





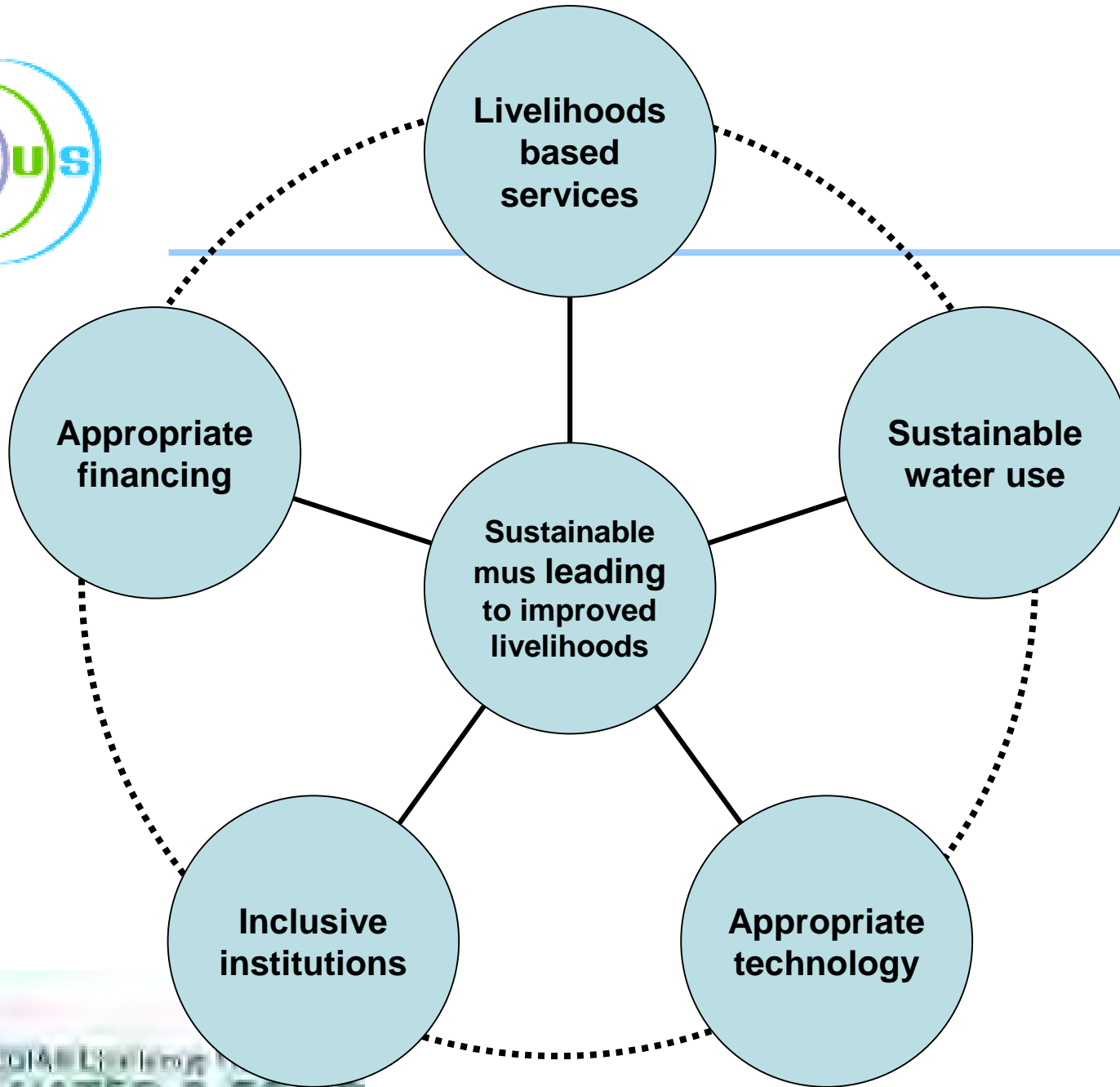
...but also

- ④ Improved cross-sectoral planning and service delivery
- ④ IDP includes refurbishment of infrastructure (for multiple uses)
- ④ Increased capacity of service providers in understanding of livelihood realities
- ④ Improved communication by communities to service providers for accountability





Community-level





Intermediate level

