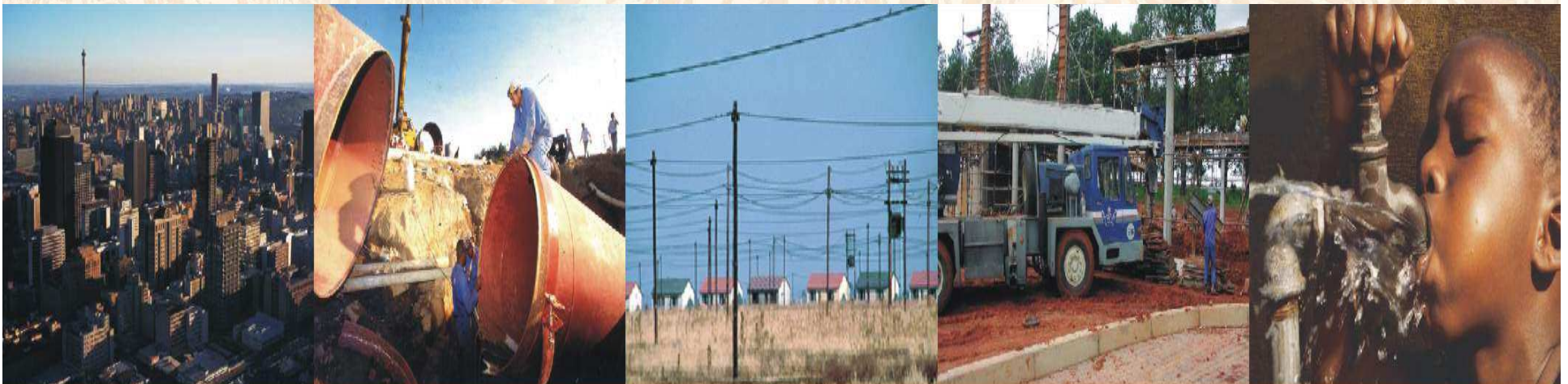




# ROLE OF LG IN WATER RESOURCES MANAGEMENT (MUNICIPAL INDABA RESOLUTIONS) WSLG 13 NOVEMBER 2008



## OBJECTIVES OF THE MUNICIPAL INDABA



- To discuss among the three spheres of Government and agree on solutions and joint actions to be embarked upon in dealing with these challenges
- To share international experiences on an integrated approach to the management of Water Resources and Water and Sanitation Services

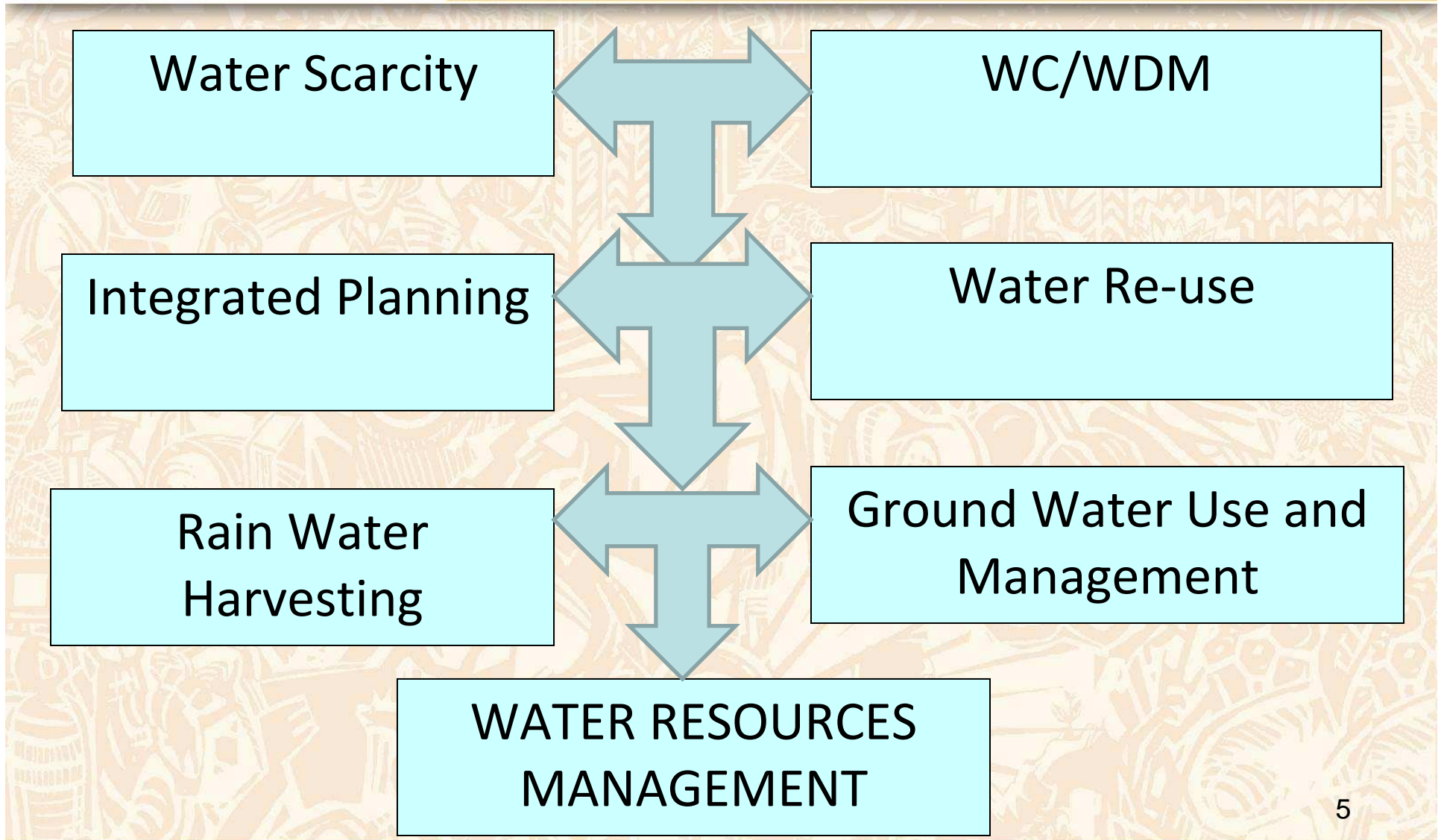
# Some Acknowledgement

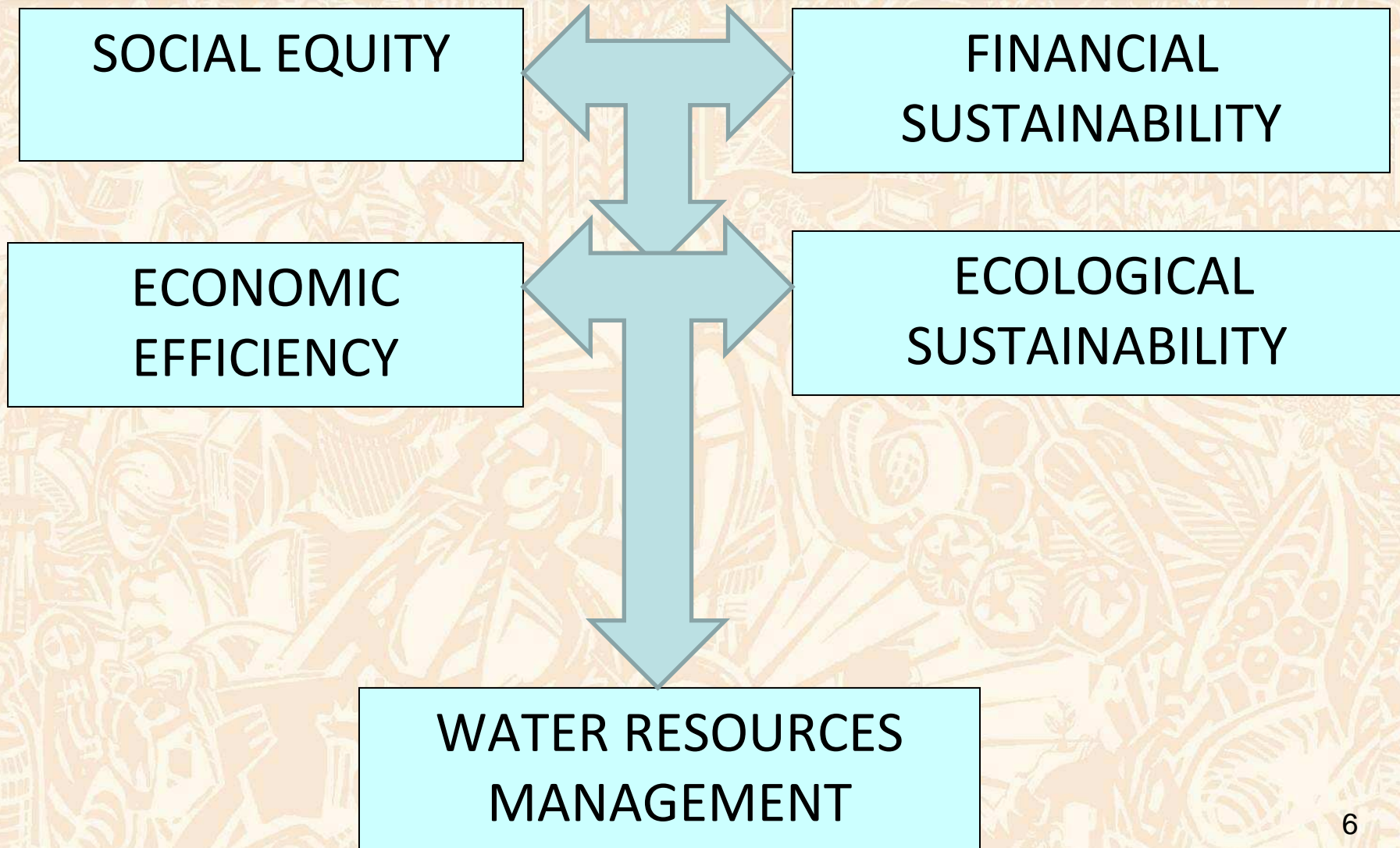


- All local government areas are situated within a catchment (or more than one catchment)
- Activities of local government impact on the water resources of that catchment
- Management of the water resources in that catchment impact on local government's ability to carry out its mandate.



- Meeting human basic needs of present and future generations
- Equitable Access to Water
- Facilitating Social and Economic Development
- Promoting the efficient, sustainable and beneficial use of water in the public interests
- Redress
- Providing for growing demand





## OUR APPROACH TO IWRM AS LG



- IWRM is a comprehensive approach to improving **planning, conservation, development and management of water**
- It aims at maximising **economic and social benefits** (LED and FBW) respectively in an equitable manner without compromising sustainability of environmental systems and social
- **Spatial Planning and development IDP**



**OBJECTIVE: INTEGRATED WATER RESOURCES  
MANAGEMENT Y**

***Co-operative Governance  
IGR  
Interdependent, interrelated and  
distinctive***

***POLICY & LEGISLATION  
NWRS AND NWA***



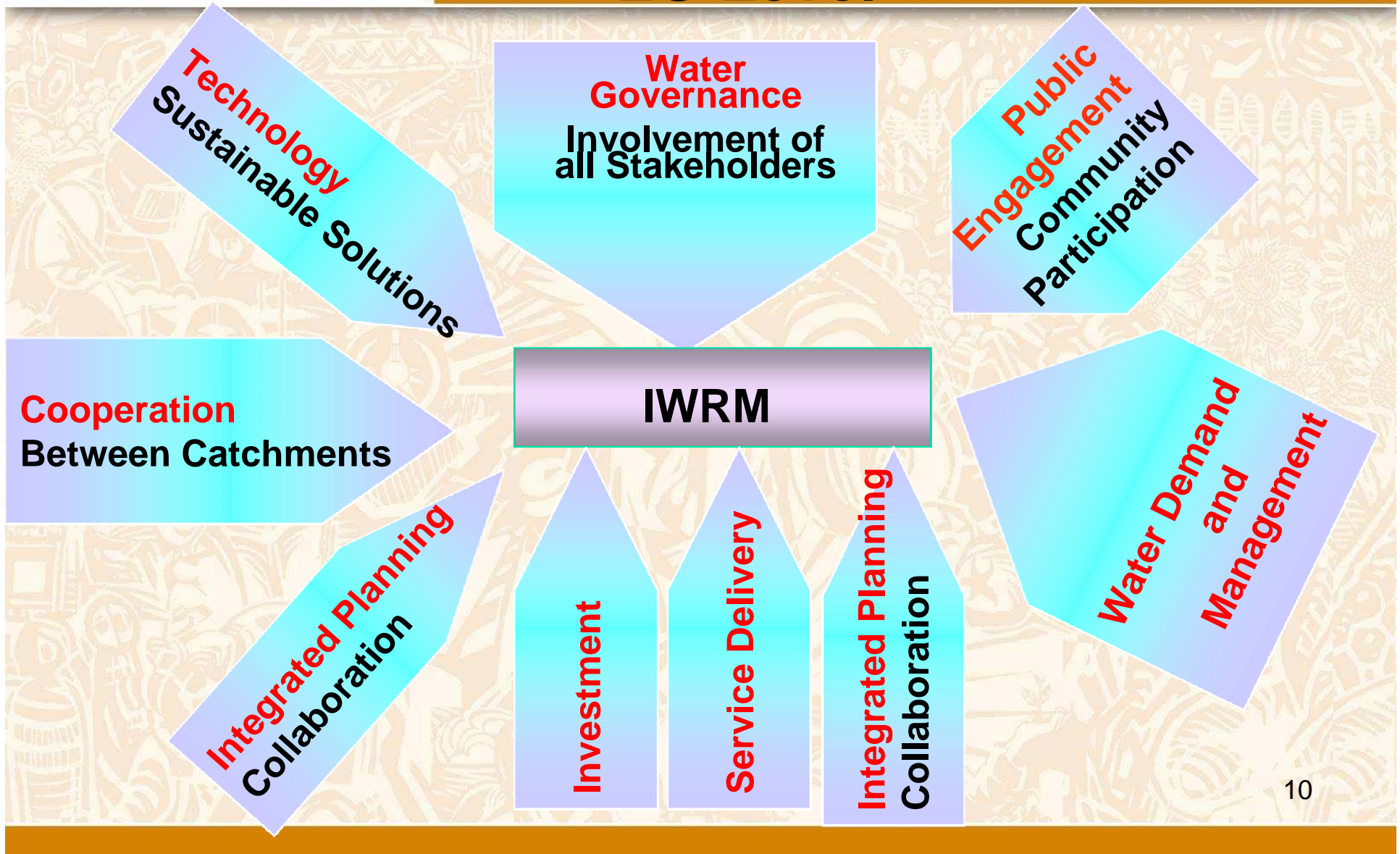
**OBJECTIVE: COLLABORATION IN WATER RESOURCES  
MANAGEMENT**

***WATER USE REGULATION  
(BY-LAWS)***

***WATER USE AUTHORISATION  
(REGISTRATION OF SMALL USERS)***

***INTEGRATED PLANNING  
(Recon Strategies and LED)***

# Way Forward Drivers of IWRM at LG Level



# THANK YOU

